




**100**  
ATLAS 1919 - 2019

**ATLAS**  
SINCE 1919

**ROBUST.  
PRECISE.  
EFFICIENT.**



-  16.8 - 19.0 t
-  95 kW (130 HP)
-  0.7 - 1.1 m<sup>3</sup>



**CRAWLER EXCAVATOR 170LC**

[WWW.ATLASGMBH.COM](http://WWW.ATLASGMBH.COM)

# TECHNICAL SPECIFICATION 170LC

## Technical Specification

### ENGINE

Power according to ISO 9249 .....95 kW (130 HP)	Cylinder capacity..... 4038 cm <sup>3</sup>	Battery ..... 2 x 12 V / 100 Ah
RPM ..... 1800/min	Number of cylinders.....4	Alternator ..... 24 V / 100 Ah
Make/ Model ..... Deutz TCD 4.1 (Tier 4F)	Cooling system.....water cooled	Starter ..... 24 V / 4 kW
Design ..... Turbocharger	Air filter..... Dry air filter	

### HYDRAULIC SYSTEM

• AWE 5 system (Load sensing)	• Suction valves for all work functions	• 2 additional circuits for additional consumer loads possible
• Load limit controlled high-performance pump	• Load-retaining and fine lowering valves in lifting circuit	• Max. oil flow.....260 l/min
• Fuel-efficient flow-on-demand control	• Pipe break protection valves for lifting and articulated cylinders	• Max. operating pressure .....350 bar
• Sensitive, proportional, independent control	• Grab / grab-rotating function equipped as standard	• Operating modes: 3 pre-programmed modes (Fine, Eco, Power)
• Primary and secondary protection against overload		

### SWING ASSEMBLY

• Swing motor:	Axial piston motor with priority valve	• Superstructure max. RPM ..... 9/min
• Swing gear:	Multistage planetary gear	• Swing torque..... 41 kNm
• Swing brake:	Automatic multidisc	
• Drive on internal clogged slewing ring		

### TRACTION DRIVE AND BRAKES

• Steering:	2 control levers / pedals enable separate drive of both chains	• Speed Stage 1 .....max. 0-2.1 km/h
• Traction drive:	2 automatic drive positions	• Speed Stage 2.....max. 0-4.8 km/h
• Brakes:	Hydraulic, service-free multidisc brakes	• Tractive force..... 240 kN
		• Max. climbing power ..... 70 %

### UNDERCARRIAGE

• Complete heavy duty undercarriage in X-design	• Chain tensioner through greasing cylinder, spring loaded	• Track guided by rollers and idler unit
• Crawler unit with asymmetric roof profile and integrated traction drive with planetary transmission	• Lubricated sealed chain, drive quality B4HD, Track width 2200 mm, 4500 mm long, 600 mm track chain	• Operating weight .....16.8 - 19.0 t
• Automatic hydraulic controlled brakes and brake valve		

### FILL CAPACITIES

• Fuel tank ..... 301 liter	• Engine oil ..... 10 liter	• Hydraulic System ..... 290 liter
• Cooling system..... 35 liter	• Hydraulic tank ..... 180 liter	• Ad Blue .....32 liter

### DRIVER'S CAB

• Meets latest safety standards	<b>CONTROL:</b>	<b>CLIMATE CONTROL:</b>
• Extra large entry zone	• Ergonomic joysticks with proportional slide control	• Air conditioning equipped as standard
• Spacious leg room	• Slim steering column, height and tilt adjustable	• Very good air distribution through optimally arranged nozzles
• Excellent circumferential visibility	• Indicators, controls and operating switches are clearly arranged	
• Preparation for radio installation with mute function		<b>SOUND LEVELS:</b>
	<b>MONITORING:</b>	• ISO 6396 (L <sub>p</sub> A) in driver's cab ..... 70 dB(A)
<b>DRIVER'S SEAT:</b>	• Operating data appears display	• 2000/14 EG (L <sub>w</sub> A) ambience level...97 dB(A)
• Air-cushioned comfort seat (optional seat heating)	• Automatic system for monitoring, warning and storage of data	
• Arm rests and lumbar support		
• Seat adjustable separately from console		

# WORKING EQUIPMENT 170LC

## Working Equipment

### BASIC UNIT

<b>A 6.82</b>	ATLAS-Hydraulic-Crawler excavator 170LC with continuously rotating uppercarriage and two lifting cylinders, but without base arm, with ATLAS cabin 935 with sound absorption, heating by utilizing the engine cooling water heat and air conditioning, swing radius 2240 mm, track 2200 mm, 4500 mm long, track-chain 600 mm wide
---------------	---

### DRIVE OPTION

<b>6103303</b>	Track 2000 mm, Overall Length 4500 mm B4HD- Drive parts
----------------	---

### DRIVE OPTION

<b>6051193</b>	Track 2200 mm, Overall Length 5000 mm B4HD- Drive parts
----------------	---

### BOOM VARIANTS

<b>C 6.3 M</b>	Monoblock boom, one stick cylinder, Length 4320 mm
<b>C 6.4 MG</b>	Monoblock boom straight with, stick cylinder, length 4850 mm
<b>C 6.5 M</b>	Monoblock boom, one stick cylinder, Length 5280 mm
<b>C 6.6 i</b>	Industry boom, length 6000 mm
<b>C 6.41</b>	Base arm, adjusting cylinder, hose rupture safety, incl. hydraulic mounting kit, suitable for C 6.46
<b>C 6.46</b>	Boom, one stick cylinder, suitable for C 6.41, Length 3095 mm

### CONTINUED: BOOM VARIANTS

<b>C 6.461</b>	Boom, one stick cylinder, suitable for C 6.41, Length 3620 mm
<b>C 6.462</b>	Boom, one stick cylinder, suitable for C 6.41, Length 4100 mm

### ATTACHMENTS

		Capacity (SAE)	Cutting width
<b>F 415</b>	Bucket	0.67 m <sup>3</sup>	850 mm
<b>F 416</b>	Bucket	0.82 m <sup>3</sup>	1000 mm
<b>F 418</b>	Bucket	1.12 m <sup>3</sup>	1300 mm
<b>G 644</b>	Trenching bucket	0.56 m <sup>3</sup>	2000 mm

### BUCKET CYLINDER

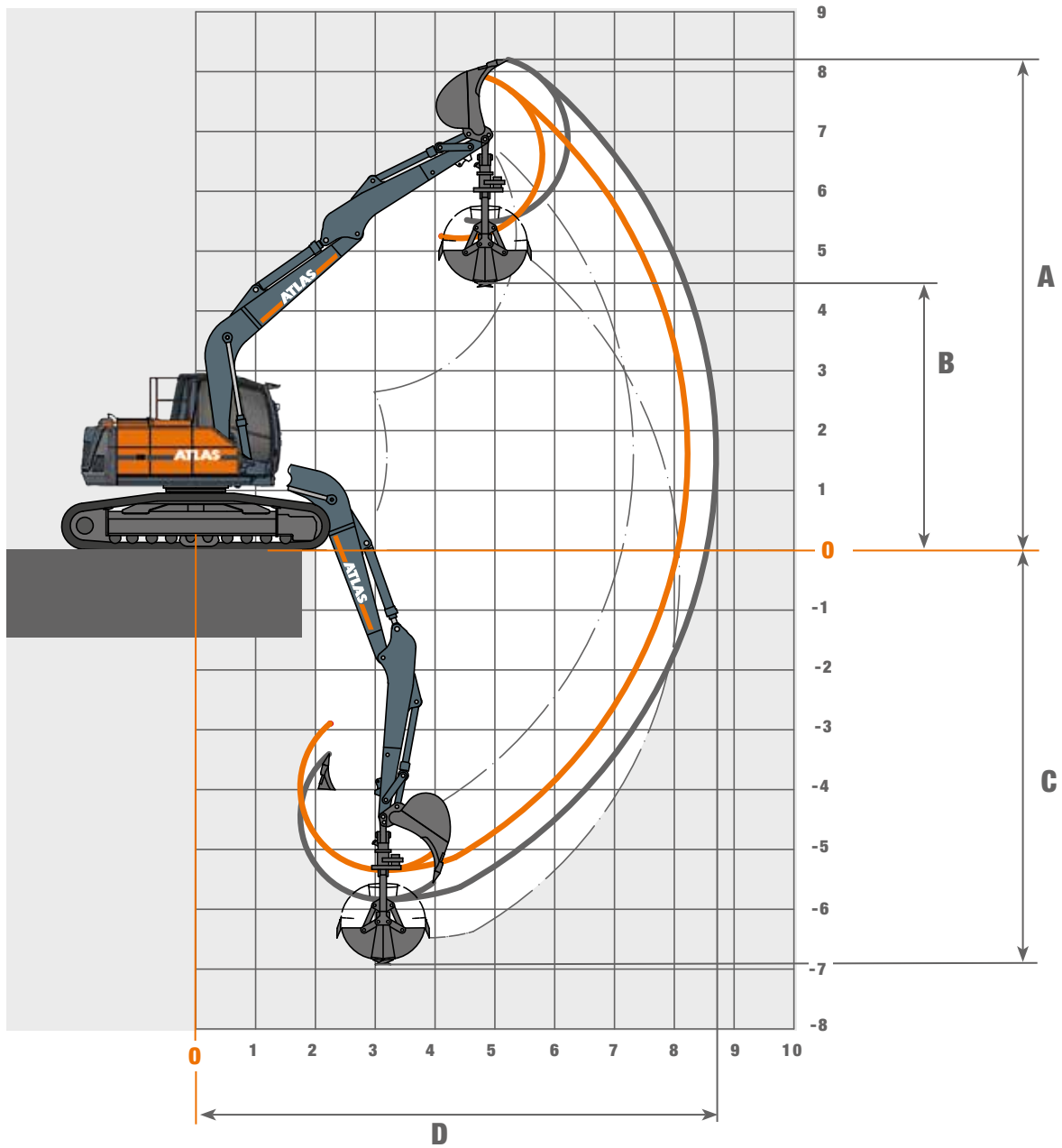
<b>F 6.1</b>	Bucket cylinder, with bucket linkage
--------------	--------------------------------------

### STICK

<b>D 6.2</b>	Stick, length 2160 mm, for Monoblock- and adjustable boom
<b>D 6.3</b>	Stick, length 2660 mm, for Monoblock- and adjustable boom
<b>D 6.31</b>	Stick, length 3160 mm, for adjustable boom
<b>D 6.5</b>	Stick for trench cleaning, length 3550 mm
<b>D 6.14 i</b>	Stick, length 4000 mm, only for C 6.6 i
<b>D 6.14IS</b>	Stick. with straight tip, length 4000 m, only for C 6.6 i

# WORKING RANGES 170LC

## Working ranges Monoblock boom 4.32 m (C6.3M)



STICK D 6.2 - Length 2160 mm				
Equipment: A 6.82, C 6.3M, D 6.2, F6.1, F 416				
			Dipp	Grabber
A	Max. lifting height	mm	7930	-
B	Max. dump height	mm	5200	4130
C	Max. Digging depth	mm	5340	6430
D	Max. reach	mm	8220	6840
	Breakout force	kN	130	-
	Tear-out force	kN	82	-

STICK D 6.3 - Length 2660 mm				
Equipment: A 6.82, C 6.3M, D 6.3, F6.1, F 416				
			Dipp	Grabber
A	Max. lifting height	mm	8200	-
B	Max. dump height	mm	5500	4400
C	Max. Digging depth	mm	5840	6920
D	Max. reach	mm	8700	7310
	Breakout force	kN	130	-
	Tear-out force	kN	72	-



# LIFTING CAPACITIES 170LC

## Lifting capacities Monoblock boom 4.32 m (C6.3M)

Monoblock boom 4.32 m (C6.3M) with Stick 2.16 m (D6.2). Max. Reach 8.22 m										
Heights	Undercarriage type	2.5 m	3.0 m	3.5 m	4.0 m	4.5 m	5.0 m	5.5 m	6.0 m	6.5 m
+ 6.0 m	FRONT						3599			
	LATERAL						3599			
+ 5.0 m	FRONT						4210	4199		
	LATERAL						4210	3719*		
+ 4.0 m	FRONT					4654	4453	4306	4213	
	LATERAL					4654	4232*	3686*	3242*	
+ 3.0 m	FRONT			6609	5827	5287	4896	4604	4387	4159
	LATERAL			6609	5626*	4771*	4121*	3610*	3194*	2845*
+ 2.0 m	FRONT			8011	6799	5981	5397	4962	4629	4368
	LATERAL			6446*	5381*	4597*	3995*	3517*	3129*	2804*
+ 1.0 m	FRONT			8861	7491	6518	5803	5259	4831	4474
	LATERAL			6200*	5191*	4451*	3883*	3433*	3066*	2761*
0 m	FRONT		7095	9024	7735	6754	5995	5392	4893	4435
	LATERAL		7095	6094*	5085*	4359*	3807*	3373*	3023*	2739*
- 1.0 m	FRONT	7621	10105	8690	7553	6640	5895	5265	4682	
	LATERAL	7621	7640*	6091*	5064*	4332*	3784*	3358*	3022*	
- 2.0 m	FRONT	10434	9019	7864	6901	6083	5355	4624		
	LATERAL	10353*	7717*	6143*	5101*	4362*	3813*	3397*		
- 3.0 m	FRONT	8189	7191	6318	5512	4686				
	LATERAL	8189	7191	6260*	5204*	4464*				

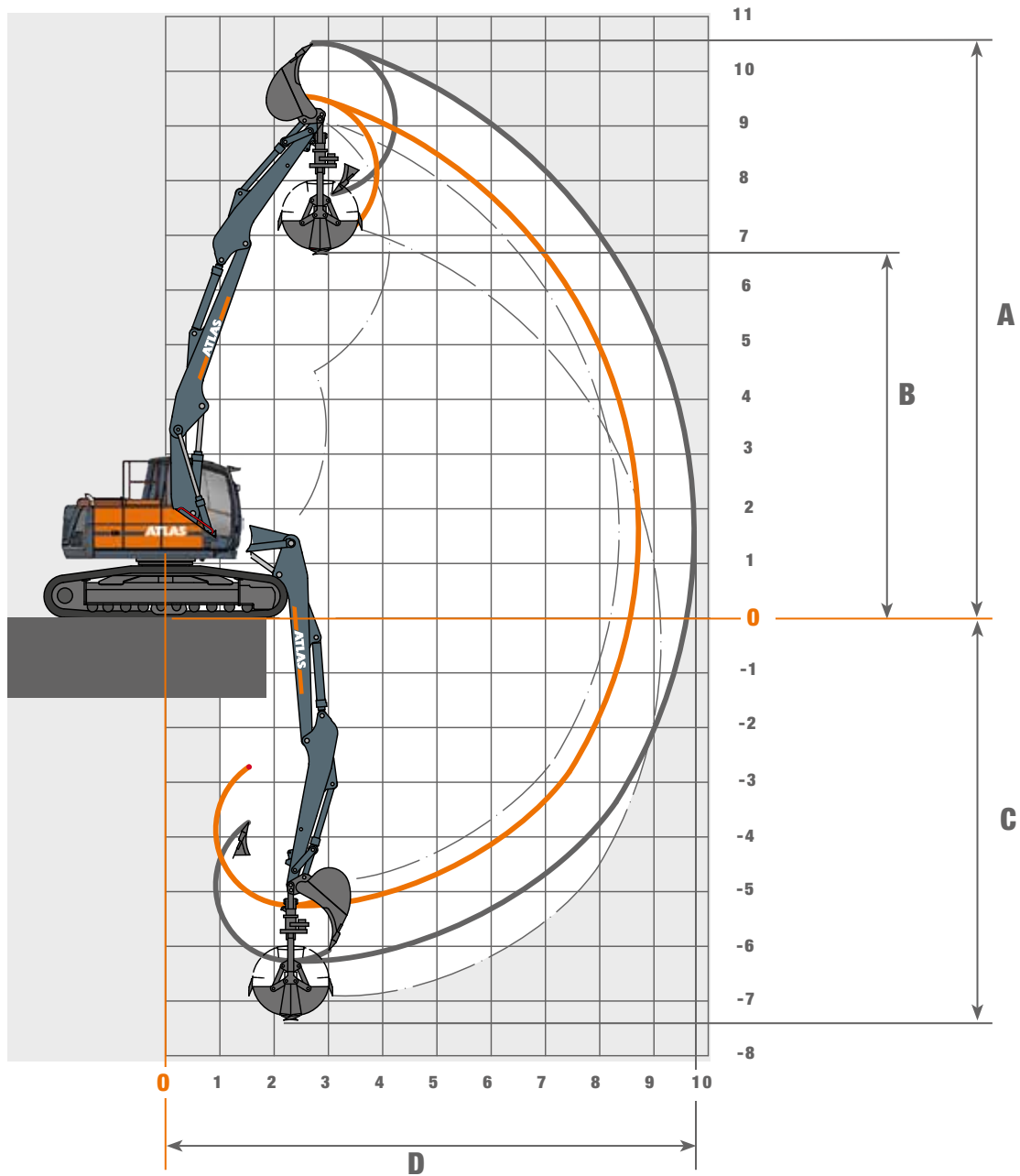
Monoblock boom 4.32 m (C6.3M) with Stick 2.66 m (D6.3). Max. Reach 8.70 m											
Heights	Undercarriage type	2.5 m	3.0 m	3.5 m	4.0 m	4.5 m	5.0 m	5.5 m	6.0 m	6.5 m	7.0 m
+ 6.0 m	FRONT							3184			
	LATERAL							3184			
+ 5.0 m	FRONT							3737	3701		
	LATERAL							3737	3308*		
+ 4.0 m	FRONT							3919	3845	3717	
	LATERAL							3732*	3282*	2908*	
+ 3.0 m	FRONT				5211	4803	4498	4263	4082	3944	3000
	LATERAL				5211	4803	4168*	3643*	3219*	2868*	2568*
+ 2.0 m	FRONT			7278	6260	5561	5055	4674	4380	4148	3828
	LATERAL			6566*	5456*	4645*	4025*	3537*	3140*	2812*	2533*
+ 1.0 m	FRONT			8418	7124	6216	5552	5049	4655	4336	4057
	LATERAL			6250*	5222*	4469*	3892*	3435*	3063*	2754*	2494*
0 m	FRONT		7630	8915	7589	6610	5867	5288	4821	4427	3202
	LATERAL		7560*	6074*	5072*	4345*	3792*	3356*	3002*	2710*	2468*
- 1.0 m	FRONT		9694	8857	7624	6672	5921	5311	4794	4314	
	LATERAL		7533*	6016*	5006*	4283*	3739*	3314*	2974*	2698*	
- 2.0 m	FRONT	10026	9692	8312	7231	6359	5635	5004	4392		
	LATERAL	10026	7583*	6041*	5017*	4288*	3744*	3323*	2994*		
- 3.0 m	FRONT	9659	8262	7170	6268	5485	4749	3516			
	LATERAL	9659	7698*	6128*	5087*	4351*	3807*	3407*			

The specified max. loading capacities in kilogrammes include a stability of 25% or are calculated at 87% of the hydraulic lifting power, as per ISO10567.  
 These values are applicable at the tip of the arm with optimum positioning of the corresponding arm system and with the pressure switched on. \*Value limited due to excavator stability..



# WORKING RANGES 170LC

## Working ranges Adjustable boom 1.95 m (C6.41)



### STICK D 6.2 - LENGTH 2160 MM

Equipment: A 6.82, C 6.41, C6.46, D 6.2, F6.1, F 416

			Dipp	Grabber
A	Max. lifting height	mm	9550	-
B	Max. dump height	mm	6900	5700
C	Max. Digging depth	mm	5250	6300
D	Max. reach	mm	8700	7350
	Breakout force	kN	130	-
	Tearout force	kN	82	-

### STICK D 6.3 - LENGTH 2660 MM

Equipment: A 6.82, C 6.41, C6.461, D 6.3, F6.1, F 416

			Dipp	Grabber
A	Max. lifting height	mm	10550	-
B	Max. dump height	mm	7850	6650
C	Max. Digging depth	mm	6260	7350
D	Max. reach	mm	9730	8360
	Breakout force	kN	130	-
	Tearout force	kN	72	-

# LIFTING CAPACITIES 170LC

## Lifting capacities Adjustable boom 1.95 m (C6.41)

Adjustable boom 1.95 m (C6.41). Boom 3.62 m (C6.461) with Stick 2.16 m (D6.2). Max. Reach 8.70 m												
Heights	Undercarriage type	2.5 m	3.0 m	3.5 m	4.0 m	4.5 m	5.0 m	5.5 m	6.0 m	6.5 m	7.0 m	7.5 m
+ 8.0 m	FRONT			5510	5199							
	LATERAL			5510	5199							
+ 7.0 m	FRONT				4840	4574	4379	4267				
	LATERAL				4840	4574	4254*	3620*				
+ 6.0 m	FRONT				4932	4604	4343	4135	3976			
	LATERAL				4932	4604	4256*	3715*	3233*			
+ 5.0 m	FRONT		5920	5928	5332	4881	4527	4244	4014	3830	3693	
	LATERAL		5920	5928	5332	4857*	4199	3684*	3268*	2860*	2474*	
+ 4.0 m	FRONT		6121	6524	5989	5335	4845	4465	4161	3912	3706	3350
	LATERAL		6121	6524	5544*	4741*	4118*	3634*	3239*	2890*	2513*	2188*
+ 3.0 m	FRONT		5813	6291	6380	5843	5206	4722	4341	4032	3772	3545
	LATERAL		5813	6291	5396*	4630*	4045*	3581*	3206*	2881*	2510*	2198*
+ 2.0 m	FRONT		7111	6991	6712	6203	5482	4928	4488	4128	3824	3551
	LATERAL		7111	6338*	5312	4565*	3995*	3551	3194*	2839*	2478*	2177*
+ 1.0 m	FRONT	7017	8110	7723	7109	6267	5564	5000	4538	4151	3824	3559
	LATERAL	7017	7892*	6342*	5300*	4551	3990*	3556*	3184*	2768*	2424*	2140*
0 m	FRONT	8884	9459	8380	7212	6282	5568	5000	4539	4160	3864	3445
	LATERAL	8884	7908*	6373*	5325*	4557*	3966*	3493*	3071*	2678*	2358*	2102*
- 1.0 m	FRONT	12435	10362	8566	7292	6348	5624	5054	4603	4240	3713	
	LATERAL	10274*	7746*	6216*	5185*	4437*	3867*	3396*	2950*	2590*	2308*	
- 2.0 m	FRONT	13301	10550	8728	7441	6493	5811	5202	4565	3767		
	LATERAL	10240*	7687*	6149*	5120*	4382*	3770*	3259*	2863*	2547*		

Adjustable boom 1.95 m (C6.41). Boom 3.62 m (C6.461) with Stick 2.66 m (D6.3). Max. Reach 9.73 m													
Heights	Undercarriage type	2.5 m	3.0 m	3.5 m	4.0 m	4.5 m	5.0 m	5.5 m	6.0 m	6.5 m	7.0 m	7.5 m	8.0 m
+ 8.0 m	FRONT				4614	4413	4003						
	LATERAL				4614	4413	4003						
+ 7.0 m	FRONT					4187	4013	3879	3792				
	LATERAL					4187	4013	3748*	3241*				
+ 6.0 m	FRONT					4251	4034	3854	3706	3590	3051		
	LATERAL					4251	4034	3749	3304*	2905*	2508*		
+ 5.0 m	FRONT			4352	4695	4532	4234	3990	3788	3619	3479	3271	
	LATERAL			4352	4695	4532	4234	3704*	3282*	2931*	2582*	2244*	
+ 4.0 m	FRONT		6313	6284	5538	4988	4566	4231	3959	3733	3544	3382	2593
	LATERAL		6313	6284	5538	4774*	4133*	3637	3236*	2907*	2606*	2276*	1989*
+ 3.0 m	FRONT		5983	6354	6302	5527	4956	4517	4168	3882	3643	3437	3250
	LATERAL		5983	6354	5415*	4633*	4042*	3572*	3191*	2878*	2599*	2274*	1996*
+ 2.0 m	FRONT		7177	7031	6696	5982	5297	4772	4356	4017	3733	3486	3257
	LATERAL		7177	6310*	5288*	4541*	3971*	3521	3156*	2863*	2560*	2243*	1977*
+ 1.0 m	FRONT	7890	7840	7550	7029	6189	5480	4919	4465	4090	3771	3491	3258
	LATERAL	7890	7771*	6265*	5240*	4497*	3940*	3500*	3155*	2859*	2496*	2194*	1942*
0 m	FRONT	9187	8900	8117	7095	6188	5486	4927	4469	4088	3769	3513	3165
	LATERAL	9187	7833*	6293*	5259*	4516*	3958*	3513*	3121*	2753*	2414*	2133*	1906*
- 1.0 m	FRONT	11264	9962	8399	7154	6230	5518	4953	4496	4125	3839	3432	
	LATERAL	10267*	7753*	6226*	5192*	4442*	3868*	3413*	3022*	2641*	2332*	2083*	
- 2.0 m	FRONT	12914	10323	8536	7271	6333	5614	5055	4639	4176	3566		
	LATERAL	10164*	7639*	6114*	5091*	4353*	3795*	3319*	2891*	2553*	2282*		
- 2.0 m	FRONT	13363	10621	8809	7548	6609	5785	5027	4240	3267			
	LATERAL	10184*	7633*	6098*	5074*	4310*	3681*	3201*	2823*	2524*			

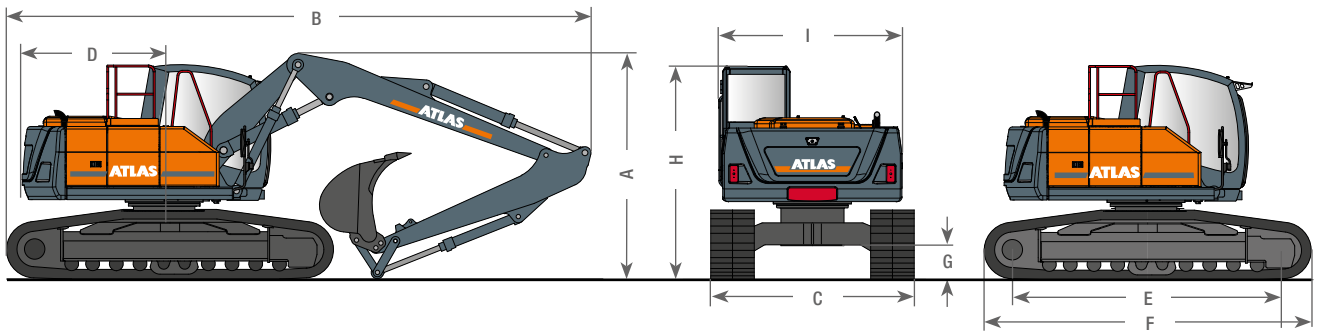
The specified max. loading capacities in kilogrammes include a stability of 25% or are calculated at 87% of the hydraulic lifting power, as per ISO10567. These values are applicable at the tip of the arm with optimum positioning of the corresponding arm system and with the pressure switched on. \*Value limited due to excavator stability.



# DIMENSIONS 170LC

## Dimensions

### 170LC Transport position



A	TRANSPORT HEIGHT		B	TRANSPORT LENGTH	
	Adjustable boom. 1.95 m (C6.41), 3.62 m (C6.461), 2.16 m (D6.2)	2.94 m	Adjustable boom. 1.95 m (C6.41), 3.10 m (C6.461), 2.16 m (D6.2)	8.18 m	
	Adjustable boom. 1.95 m (C6.41), 3.62 m (C6.461), 2.66 m (D6.3)	3.10 m	Adjustable boom. 1.95 m (C6.41), 3.10 m (C6.461), 2.16 m (D6.2)	8.05 m	
	Monoblock 4.30 m (C6.3M) with Stick 2.16 m (D6.2)	2.94 m	Monoblock 4.30 m (C6.3M) with Stick 2.16 m (D6.2)	7.65 m	
C	TRANSPORT WIDTH WHEEL	BASE 2.20 m	F	DRIVELENGTH	4.50 m
	Base plate width 600 mm	2.80 m	G	GROUND CLEARANCE	0.46 m
D	REAR SWIVEL RADIUS	2.24 m	H	HEIGHT OVER CABIN	2.95 m
E	BEARING CHAIN LENGTH	3.71 m	I	SUPERSTRUCTURE WIDTH	2.50 m

Design changes reserved, data not binding. Devices comply with the new European safety regulations.



## **GANDERKESEE FACTORY**

Atlas GmbH  
Atlasstraße 6  
D-27777 Ganderkesee,  
Germany

Tel.: +49 (0) 4222 954 0  
Fax: +49 (0) 4222 954 220  
E-mail: [info@atlasgmbh.com](mailto:info@atlasgmbh.com)  
[www.atlasgmbh.com](http://www.atlasgmbh.com)



## **VECHTA FACTORY**

Atlas GmbH  
Theodor-Heuss-Str. 3  
D-49377 Vechta  
Germany

T: +49 (0) 4441 954 0  
F: +49 (0) 4441 954 299  
E-mail: [info@atlasgmbh.com](mailto:info@atlasgmbh.com)  
[www.atlasgmbh.com](http://www.atlasgmbh.com)



## **DELMENHORST FACTORY**

Atlas GmbH  
Stedinger Straße 324  
D-27751 Delmenhorst  
Germany

T: +49 (0) 4221 49 10  
F: +49 (0) 4221 49 14 43  
E-mail: [info@atlasgmbh.com](mailto:info@atlasgmbh.com)  
[www.atlasgmbh.com](http://www.atlasgmbh.com)

## **ATLAS CRANES UK LTD NATIONAL SALES & SERVICE FACILITY**

Wharfedale Road,  
Euroway Trading Est.  
Bradford, England BD4 6SL  
United Kingdom

T: +44 8444 99 66 88  
F: +44 1274 65 37 85  
E-mail: [atlasuk@atlasgmbh.com](mailto:atlasuk@atlasgmbh.com)  
[www.atlas-cranes.co.uk](http://www.atlas-cranes.co.uk)  
[www.atlasgmbh.com](http://www.atlasgmbh.com)



**SINCE 1919**  
**ATLAS**



[www.atlasgmbh.com](http://www.atlasgmbh.com)

**ATLAS GmbH**  
EXCAVATORS  
Atlasstraße 6  
D-27777 Ganderkesee, Germany  
T: +49 (0) 4222 954 0  
Fax: +49 (0) 4222 954 220  
[info@atlasgmbh.com](mailto:info@atlasgmbh.com)