

100
ATLAS 1919 - 2019

ATLAS
SINCE 1919

-  max. 19.9 t
-  105 kW (143 HP)
EU Stage V
-  0.82 - 1,12 m³

**ROBUST.
PRECISE.
EFFICIENT.**



MADE
IN
GERMANY

CRAWLER EXCAVATOR 190LC *blue*

WWW.ATLASGMBH.COM

ATLAS – CONSTRUCTION MACHINERY MANUFACTURER WITH TRADITION

From person to person

When Hinrich Weyhausen started selling construction and agricultural machinery in 1919, he discovered that the machines which his customers actually needed were not available. So he listened to them carefully and went about building the machines himself – exactly according to the requirements of the people who used his machines every day. He carried out pioneering work with a passion under the brand name of Atlas. His focus was always on the benefit of the machines. And nothing has changed for us in terms of this ideal today.



**Atlas will make you strong
with excellent products and
a comprehensive service.**



With highly motivated employees, a great deal of commitment and expertise ATLAS GmbH develops successful crane & excavator technologies. Numerous customers, engineers and experts all around the globe have made their contribution. The result is robust equipment to enable you to work more effectively and safely than ever before.

As our know-how grew, so too did our dealer and service network worldwide.

We can hence guarantee – in those days and today too – that we will always be on the spot when you need us.



Atlas manufactures a wide range of equipment for the construction, railroad, material handling and infrastructure industries. You will find more information on Atlas under www.atlasgmbh.com.

CONSTRUCTION



TRANSPORT



INFRASTRUCTURE



RECYCLING



CUSTOMER SATISFACTION IS OUR PRIORITY!

WE ARE COMMITTED

to providing our customers with highest quality products and services.

QUALITY STANDARDS AND CUSTOMER SATISFACTION

are measured in terms of service performance, reliability, relevance and timeliness.

OUR COMPANY'S MISSION, GOALS AND OBJECTIVES

are directed towards ongoing process improvement as a basis for strengthening our competitive position and for improving product quality and service standards.

QUALITY STANDARDS AND CUSTOMER SATISFACTION

are measured in terms of product performance and reliability.

PRODUCT RANGE

190LC





**EXTENSIVE DEALER NETWORK
EXCELLENT SERVICE
CUSTOMER FOCUSED**

TECHNICAL SPECIFICATION 190LC

ENGINE

Power rating.....105 kW (143 HP)	Bore / cylinder stroke 101 / 126	STANDARD BASIC EQUIPMENT:
RPM 1800/min	Cooling system Water-cooled	• Automatic idling system / Engine stop
Model..... Deutz TCD 6.1 L6 EU Stage V	Air filter..... Dry air filter	• Cold start assistance
Design..... Turbocharger	Battery 2 x 12 V / 100 Ah	• Diesel pre-filter
Cylinder capacity 6057 cm ³	Generator 24 V / 100 A	• Engine monitoring
Number of cylinders 6	Starter..... 24 V / 4 kW	

HYDRAULIC SYSTEM

• AWE 5 system (Load sensing)	• Load-retaining and fine lowering valves in lifting circuit	• Operating modes: F1 (Fine)
• Load limit controlled high-performance pump	• Pipe break protection valves for lifting and articulated cylinders	F2 (Eco)
• Fuel-efficient flow-on-demand control	• Proportional grab and grab rotating function	F3 (Power)
• Sensitive, proportional, independent control	• 3 circuits for additional consumer loads possible	• Accumulator for emergency lowering of the arm system
• Primary and secondary protection against overload	• Max. oil flow 260 l/min	• Load-limit control
• Suction valves for all work functions	• Max. operating pressure 360 bar	• Cylinder end position damping

SWING ASSEMBLY

• Axial piston motor with priority valve	• Automatically controlled multi-disc brake	• Swing torque 49 kNm
• Planetary transmission	• Two, two-stage valves	• Max. swing speed 8.5/min

TRACTION DRIVE AND BRAKES

• Variable displacement motor	• Speed:	• Two automatic drive positions
• Double-acting brake valve	Stage 1 max. 0-2.5 km/h	• Tractive force 150,0 kN
• Hydraulic, service-free multidisc brakes	Stage 2 max. 0-5.1 km/h	• Gradeability 51 %

UNDERCARRIAGE

• Complete heavy duty undercarriage in X-design	• Automatic hydraulic controlled brakes and brake valve	• Chain tension adjustable via grease cylinder, pre-tension by elastomer tensioner
	• Integrated chain guides on the guide wheels as well as chain guides middle side aisle	• Lubricated sealed chain drive quality B4HD

DRIVER'S CAB

• Meets latest safety standards (ROPS)	DRIVER'S SEAT:	MONITORING:
• Extra large entry zone	• Comfort seat with headrest	• Operating data display screen
• Spacious leg room	• Arm rests and lumbar support	• Automatic system for monitoring, warning and storage of data
• Radio preparation with mute function	• Seat adjustable separately from console	• Rear view security camera
• Ready for electric cooling box	• Air suspension	• Right side camera
• Different options for storage, compartment for documents	• Heated	
• Heat-absorbing glass, tinted windows	• Horizontal and vertical suspension	CLIMATE CONTROL:
• Excellent all-way visibility	• Lumbar support	• Automatic climate control
• Bottle holder		• Excellent air distribution through optimally arranged nozzles
	CONTROL:	• Refrigerant R134a
	• Ergonomic joysticks with proportional slide control	
	• Indicators, controls and operating switches are clearly arranged	SOUND LEVELS:
		• ISO 6396 (L _p A) in driver's cab 72 dB(A)
		• 2000/14 EG (L _w A) ambience level 97 dB(A)

WORKING EQUIPMENT 190LC

BASIC UNIT

A 6.82	ATLAS hydraulic crawler excavator 190LC with continuously rotating upper carriage and two lifting cylinders, but without main boom, with ATLAS cabin 935 with sound absorption, heating by utilizing the engine cooling water heat and air conditioning, swivel radius 2240 mm, track width 2200 mm, 4500 mm long, crawler chains 600 mm wide.
--------	--

DRIVE OPTION

6103303	Track 2000 mm, Overall Length 4500 mm B4HD- Drive parts
---------	---

BOOM VARIANTS

C 6.3 M	Monoblock boom, one stick cylinder, Length 4320 mm
C 6.4 MG	Monoblock boom straight with, stick cylinder, length 4850 mm
C 6.5 M	Monoblock boom, one stick cylinder, Length 5280 mm
C 6.6 i	Industry boom, length 6000 mm
C 6.41	Base arm: adjusting cylinder, hose rupture safety, incl. hydraulic mounting kit, suitable for C 6.46
C 6.46	Boom, one stick cylinder, suitable for C 6.41, Length 3095 mm

CONTINUED: BOOM VARIANTS

C 6.461	Boom, one stick cylinder, suitable for C 6.41, Length 3620 mm
C 6.462	Boom, one stick cylinder, suitable for C 6.41, Length 4100 mm

ATTACHMENTS

		Capacity (SAE)	Cutting width
F 415	Bucket	0.67 m ³	850 mm
F 416	Bucket	0.82 m ³	1000 mm
F 418	Bucket	1.12 m ³	1300 mm
G 644	Trenching bucket	0.56 m ³	2000 mm

BUCKET CYLINDER

F 6.1	Bucket cylinder, with bucket linkage
-------	--------------------------------------

STICK

D 6.2	Stick, length 2160 mm, for Monoblock- and adjustable boom
D 6.3	Stick, length 2660 mm, for Monoblock- and adjustable boom
D 6.31	Stick, length 3160 mm, for adjustable boom
D 6.5	Stick for trench cleaning, length 3550 mm
D 6.14 i	Stick, length 4000 mm, only for C 6.6 i
D 6.14IS	Stick. with straight tip, length 4000 m, only for C 6.6 i

ADDITIONAL EQUIPMENT

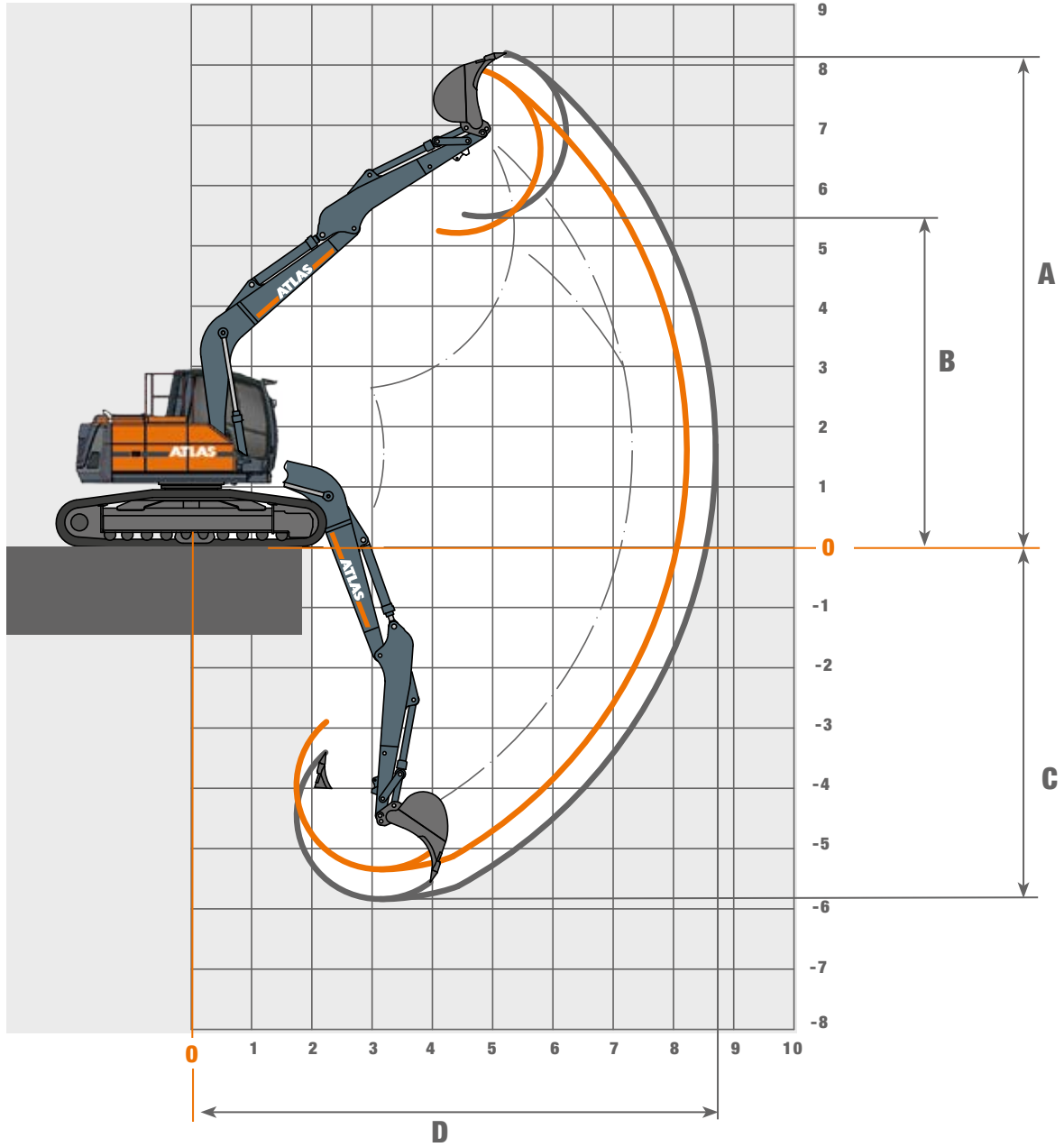
• Refueling pump	• LED working lights	• Premium Driver seat (Actimo Evolution)
• Beacon light	• Alarm-signal while driving	• Electric cooling box
• Cabin Sliding door	• Auxiliary heating with water circuit	• Radio with USB
• Cab protection guard	• Automatic working brake	• PS/GSM telemetric system for monitoring of operating data, consumption, position
• Cab elevation	• Automatically controlled and monitored electric central lubrication system for uppercarriage and arm equipment	Other additional equipment: See price list
• 270° camera system	• Biodegradable oil	Special options: upon request

FILL CAPACITIES

• Fuel tank.....301 Liter	• Engine oil..... 14 Liter	• Hydraulic system.....220 Liter
• Cooling system.....38 Liter	• Hydraulic tank 180 Liter	• Ad Blue® 32 Liter

WORKING RANGES 190LC

Monoblock boom 4.32 m (C6.3M)



STICK D 6.2 - Length 2160 mm

Equipment: A 6.82, C 6.3M, D 6.2, F6.1, F 416

			Dipp
A	Max. lifting height	mm	7930
B	Max. dump height	mm	5200
C	Max. Digging depth	mm	5340
D	Max. reach	mm	8220
	Breakout force	kN	130
	Tear-out force	kN	82

STICK D 6.3 - Length 2660 mm

Equipment: A 6.82, C 6.3M, D 6.3, F6.1, F 416

			Dipp
A	Max. lifting height	mm	8200
B	Max. dump height	mm	5500
C	Max. Digging depth	mm	5840
D	Max. reach	mm	8700
	Breakout force	kN	130
	Tear-out force	kN	72

LIFTING CAPACITIES 190LC

Monoblock boom 4.32 m (C6.3M) with Stick 2.16 m (D6.2). Max. Reach 8.22 m

Heights	Undercarriage type	2.5 m	3.0 m	3.5 m	4.0 m	4.5 m	5.0 m	5.5 m	6.0 m	6.5 m
+ 6.0 m	FRONT						3599			
	LATERAL						3599			
+ 5.0 m	FRONT						4210	4199		
	LATERAL						4210	4199		
+ 4.0 m	FRONT					4654	4453	4306	4213	
	LATERAL					4654	4453	4306	4007*	
+ 3.0 m	FRONT		7831	6609	5827	5287	4896	4604	4387	4159
	LATERAL		7831	6609	5827	5287	4896	4469*	3958*	3532*
+ 2.0 m	FRONT			8011	6799	5981	5397	4962	4629	4368
	LATERAL			8011	6742*	5736*	4974*	4375*	3891*	3490*
+ 1.0 m	FRONT			8861	7491	6518	5803	5259	4831	4474
	LATERAL			7876*	6545*	5586*	4859*	4288*	3827*	3447*
0 m	FRONT		7095	9024	7735	6754	5995	5392	4893	4435
	LATERAL		7095	7765*	6436*	5491*	4781*	4227*	3783*	3424*
- 1.0 m	FRONT	7621	10105	8690	7553	6640	5895	5265	4682	
	LATERAL	7621	9825*	7761*	6414*	5464*	4757*	4212*	3782*	
- 2.0 m	FRONT	10434	9019	7864	6901	6083	5355	4624		
	LATERAL	10434	9019	7816*	6452*	5494*	4787*	4252*		
- 3.0 m	FRONT	8189	7191	6318	5512	4686				
	LATERAL	8189	7191	6318	5512	4686				

Monoblock boom 4.32 m (C6.3M) with Stick 2.66 m (D6.3). Max. Reach 8.70 m

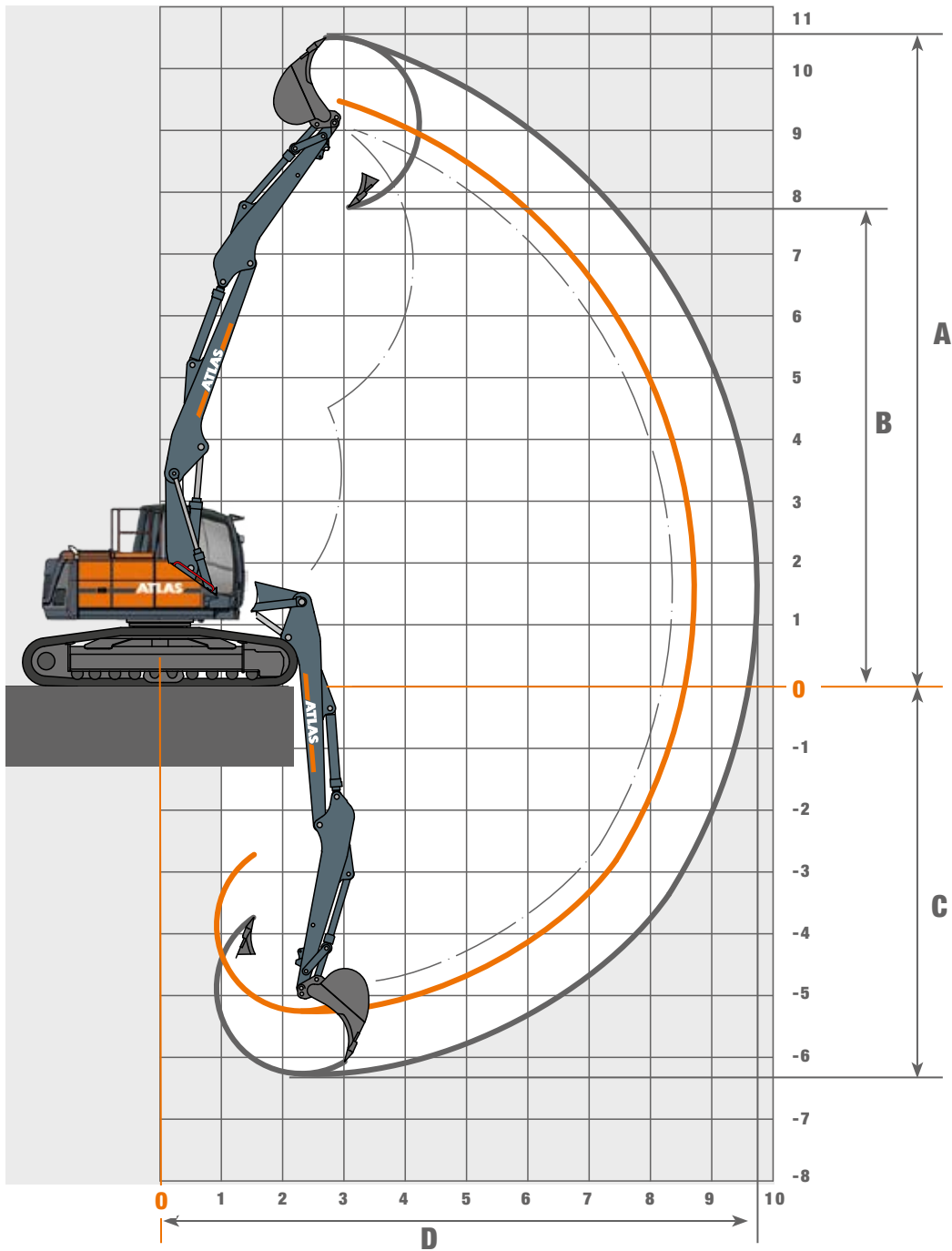
Heights	Undercarriage type	2.5 m	3.0 m	3.5 m	4.0 m	4.5 m	5.0 m	5.5 m	6.0 m	6.5 m	7.0 m
+ 6.0 m	FRONT							3184			
	LATERAL							3184			
+ 5.0 m	FRONT							3737	3701		
	LATERAL							3737	3308*		
+ 4.0 m	FRONT							3919	3845	3717	
	LATERAL							3732*	3282*	2908*	
+ 3.0 m	FRONT				5211	4803	4498	4263	4082	3944	3000
	LATERAL				5211	4803	4168*	3643*	3219*	2868*	2568*
+ 2.0 m	FRONT			7278	6260	5561	5055	4674	4380	4148	3828
	LATERAL			6566*	5456*	4645*	4025*	3537*	3140*	2812*	2533*
+ 1.0 m	FRONT			8418	7124	6216	5552	5049	4655	4336	4057
	LATERAL			6250*	5222*	4469*	3892*	3435*	3063*	2754*	2494*
0 m	FRONT		7630	8915	7589	6610	5867	5288	4821	4427	3202
	LATERAL		7560*	6074*	5072*	4345*	3792*	3356*	3002*	2710*	2468*
- 1.0 m	FRONT		9694	8857	7624	6672	5921	5311	4794	4314	
	LATERAL		7533*	6016*	5006*	4283*	3739*	3314*	2974*	2698*	
- 2.0 m	FRONT	10026	9692	8312	7231	6359	5635	5004	4392		
	LATERAL	10026	7583*	6041*	5017*	4288*	3744*	3323*	2994*		
- 3.0 m	FRONT	9659	8262	7170	6268	5485	4749	3516			
	LATERAL	9659	7698*	6128*	5087*	4351*	3807*	3407*			

The specified max. loading capacities in kilogrammes include a stability of 25% or are calculated at 87% of the hydraulic lifting power, as per ISO10567. These values are applicable at the tip of the arm with optimum positioning of the corresponding arm system and with the pressure switched on. *Value limited due to excavator stability.



WORKING RANGES 190LC

Adjustable boom 1.87 m (C6.41), Boom 3.62 m (C6.461) with Stick 2.66 m (D6.3)



STICK D 6.3 - LENGTH 2660 MM			
Equipment: A 6.82, C 6.41, C6.461, D 6.3, F6.1, F 416			
			Dipp
A	Max. lifting height	mm	10550
B	Max. dump height	mm	7850
C	Max. Digging depth	mm	6260
D	Max. reach	mm	9730
	Breakout force	kN	130
	Tearout force	kN	72

LIFTING CAPACITIES 190LC

Adjustable boom 1.87 m (C6.41), Boom 3.62 m (C6.461) with Stick 2.66 m (D6.3). Max. Reach 9.73 m

Heights	Undercarriage type	2.5 m	3.0 m	3.5 m	4.0 m	4.5 m	5.0 m	5.5 m	6.0 m	6.5 m	7.0 m	7.5 m	8.0 m
+ 8.0 m	FRONT				4590	4394	3971						
	LATERAL				4590	4394	3971						
+ 7.0 m	FRONT					4165	3995	3865	3782				
	LATERAL					4165	3995	3865	3782				
+ 6.0 m	FRONT					4229	4015	3839	3694	3581			
	LATERAL					4229	4015	3839	3694	3475*			
+ 5.0 m	FRONT			4360	4691	4510	4216	3975	3775	3609	3472	3238	
	LATERAL			4360	4691	4510	4216	3975	3775	3461*	3115*	2738*	
+ 4.0 m	FRONT		7318	6254	5513	4968	4549	4217	3947	3724	3537	3378	
	LATERAL		7318	6254	5513	4968	4549	4217	3813*	3425*	3099*	2770*	
+ 3.0 m	FRONT		7280	7309	6281	5511	4943	4506	4158	3875	3637	3433	3249
	LATERAL		7280	7309	6281	5462*	4754*	4201	3753*	3384	3078*	2765*	2447*
+ 2.0 m	FRONT	7051	7260	7249	6897	5971	5288	4765	4350	4012	3729	3484	3257
	LATERAL	7051	7260	7249	6239*	5346	4670*	4136*	3707*	3356*	3066*	2732*	2428*
+ 1.0 m	FRONT	7916	7836	7534	7024	6186	5477	4916	4463	4089	3771	3491	3257
	LATERAL	7916	7836	7421*	6186*	5301*	4629*	4106	3688*	3354	3027*	2681*	2392*
0 m	FRONT	9267	8917	8109	7095	6188	5486	4927	4469	4088	3769	3512	3149
	LATERAL	9267	8917	7462	6207*	5309*	4638*	4121*	3719*	3336*	2942*	2619*	2357*
- 1.0 m	FRONT	11340	9953	8399	7154	6230	5518	4953	4497	4125	3831	3401	
	LATERAL	11340	9471*	7557*	6283	5379*	4717	4165*	3668*	3221*	2860*	2568*	
- 2.0 m	FRONT	12920	10323	8536	7271	6333	5614	5055	4625	4144	3519		
	LATERAL	12844	9587*	7598*	6285*	5352*	4652*	4040*	3533*	3130*	2811*		
- 3.0 m	FRONT	13365	10621	8809	7549	6585	5750	4984	4172	3161			
	LATERAL	12992*	9579*	7580*	6268*	5274*	4507*	3926*	3467*	3106*			

Adjustable boom 1.87 m (C6.41), Boom 3.62 m (C6.461) with Stick 3.16 m (D6.31). Max. Reach 9.73 m

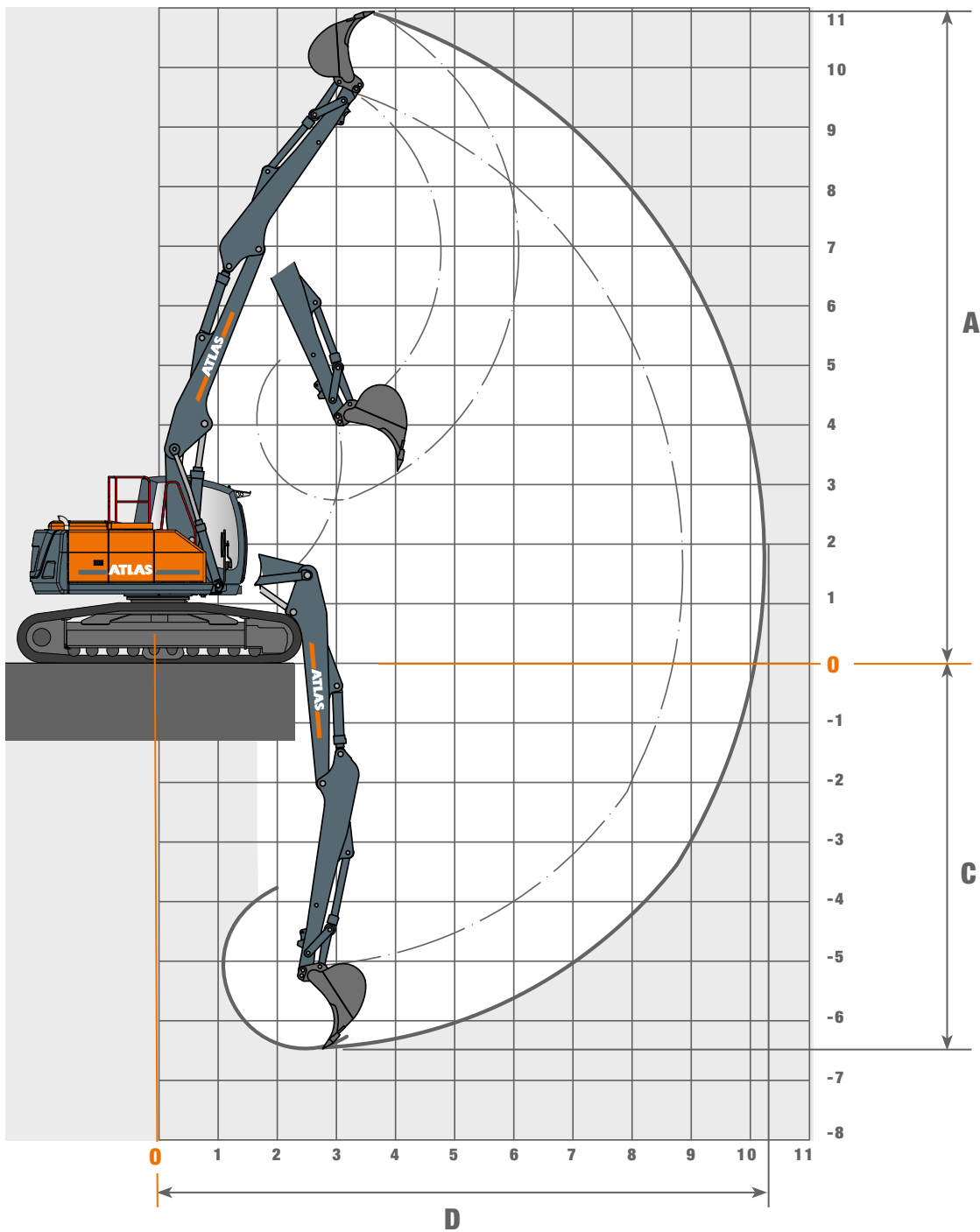
Heights	Undercarriage type	2.5 m	3.0 m	3.5 m	4.0 m	4.5 m	5.0 m	5.5 m	6.0 m	6.5 m	7.0 m	7.5 m	8.0 m	8.5 m
+ 9.0 m	FRONT				4084									
	LATERAL				4084									
+ 8.0 m	FRONT						3779	3489						
	LATERAL						3779	3489						
+ 7.0 m	FRONT						3621	3508	3418	3273				
	LATERAL						3621	3508	3418	-3128				
+ 6.0 m	FRONT						3666	3522	3398	3294	3210	2591		
	LATERAL						3666	3522	3398	-3159	-2816	-2457		
+ 5.0 m	FRONT					3743	3871	3671	3501	3355	3231	3126	2616	
	LATERAL					3743	3871	3671	3501	3137	-2816	-2515	-2203	
+ 4.0 m	FRONT		3957	4288	4485	4550	4205	3921	3687	3490	3322	3177	3051	
	LATERAL		3957	4288	4485	4550	4205	-3883	-3447	-3091	2790	-2533	-2228	
+ 3.0 m	FRONT		7337	6688	5768	5110	4614	4228	3917	3660	3445	3260	3096	2944
	LATERAL		7337	6688	5768	-4943	4300	-3791	-3377	3042	-2759	-2521	-2223	-1961
+ 2.0 m	FRONT	7243	7408	7422	6479	5631	5005	4523	4140	3827	3565	3341	3141	2952
	LATERAL	7243	7408	-6686	-5592	-4798	4189	-3712	3320	-2999	2735	-2487	-2192	-1942
+ 1.0 m	FRONT	7584	7565	7359	6877	5967	5274	4734	4301	3946	3647	3388	3154	2947
	LATERAL	7584	7565	6565	-5500	-4720	4132	-3665	-3288	-2984	-2740	-2426	-2143	-1908
0 m	FRONT	8732	8344	7776	6916	6036	5352	4803	4352	3976	3656	3385	3161	2861
	LATERAL	8732	-8160	-6559	-5485	-4707	-4120	-3661	3298	-3015	-2664	-2348	-2087	-1874
- 1.0 m	FRONT	10383	9358	8153	6947	6049	5356	4803	4354	3983	3674	3434	3102	
	LATERAL	10383	8263	6636	-5536	-4755	-4169	-3686	-3284	-2906	-2556	-2270	-2037	
- 2.0 m	FRONT	12038	10010	8272	7041	6126	5422	4866	4420	4079	3736	3243		
	LATERAL	-10932	-8222	-6583	-5480	-4683	-4079	-3604	-3165	-2778	-2464	-2213		
- 3.0 m	FRONT	12932	10254	8480	7225	6299	5618	5055	4504	3903	3123			
	LATERAL	-10890	-8165	-6522	-5422	-4635	-4010	-3465	-3040	-2701	-2427			

The specified max. loading capacities in kilogrammes include a stability of 25% or are calculated at 87% of the hydraulic lifting power, as per ISO10567. These values are applicable at the tip of the arm with optimum positioning of the corresponding arm system and with the pressure switched on. *Value limited due to excavator stability.



WORKING RANGES 190LC

Adjustable boom 1.87 m (C6.41), Boom 3.62 m (C6.461) with Stick 3.16 m (D6.31)



STICK D 6.3 - LENGTH 3160 MM

Equipment: A 6.82, C 6.41, C6.461, D 6.3, F6.1, F 416

			Dipp
A	Max. lifting height	mm	10950
B	Max. dump height	mm	8250
C	Max. Digging depth	mm	6400
D	Max. reach	mm	10300
	Breakout force	kN	130
	Tearout force	kN	61

LIFTING CAPACITIES 190LC

Adjustable boom 1.87 m (C6.41), Boom 3.62 m (C6.461) with Stick 3.16 m (D6.31).

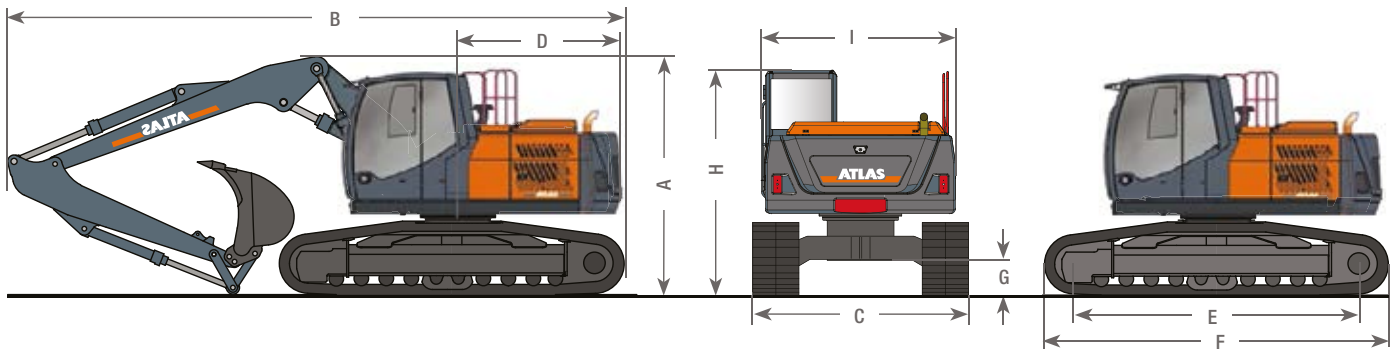
Heights	Undercarriage type	2.5 m	3.0 m	3.5 m	4.0 m	4.5 m	5.0 m	5.5 m	6.0 m	6.5 m	7.0 m	7.5 m	8.0 m	8.5 m
+ 9.0 m	FRONT				4084									
	LATERAL				4084									
+ 8.0 m	FRONT						3779	3489						
	LATERAL						3779	3489						
+ 7.0 m	FRONT						3621	3508	3418	3273				
	LATERAL						3621	3508	3418	3273				
+ 6.0 m	FRONT						3666	3522	3398	3294	3210	2591		
	LATERAL						3666	3522	3398	3294	3179	2591		
+ 5.0 m	FRONT					3743	3871	3671	3501	3355	3231	3126	2616	
	LATERAL					3743	3871	3671	3501	3355	3168*	2863*	2530*	
+ 4.0 m	FRONT		3957	4288	4485	4550	4205	3921	3687	3490	3322	3177	3051	
	LATERAL		3957	4288	4485	4550	4205	3921	3687	3467*	3130*	2847*	2557*	
+ 3.0 m	FRONT		7337	6688	5768	5110	4614	4228	3917	3660	3445	3260	3096	2944
	LATERAL		7337	6688	5768	5110	4614	4228	3792*	3409*	3090*	2823	2553*	2267*
+ 2.0 m	FRONT	7243	7408	7422	6479	5631	5005	4523	4140	3827	3565	3341	3141	2952
	LATERAL	7243	7408	7422	6309	5397*	4710*	4161*	3724*	3362*	3058*	2807	2523*	2248*
+ 1.0 m	FRONT	7584	7565	7359	6877	5967	5274	4734	4301	3946	3647	3388	3154	2947
	LATERAL	7584	7565	7359	6193*	5304*	4633	4106*	3681*	3333*	3046*	2787*	2474*	2213*
0 m	FRONT	8732	8344	7776	6916	6036	5352	4803	4352	3976	3656	3385	3161	2861
	LATERAL	8732	8344	7418*	6171*	5287	4614*	4092*	3676*	3344*	3059*	2708*	2416*	2179*
- 1.0 m	FRONT	10383	9358	8153	6947	6049	5356	4803	4354	3983	3674	3434	3102	
	LATERAL	10383	9358	7486*	6225*	5325	4652	4136*	3738	3342*	2949*	2628*	2366*	
- 2.0 m	FRONT	12038	10010	8272	7041	6126	5422	4866	4420	4079	3736	3243		
	LATERAL	12038	9551*	7634*	6353*	5426*	4712*	4155*	3650*	3211*	2855*	2571*		
- 3.0 m	FRONT	12932	10254	8480	7225	6299	5618	5055	4504	3903	3123			
	LATERAL	12929	9666*	7646*	6317*	5376*	4641*	4013*	3523*	3134*	2818*			
- 4.0 m	FRONT	13315	10633	8818	7417	6292	5330	4409	3412					
	LATERAL	13241	9749*	7688*	6270*	5260*	4514*	3938*	3412					
- 5.0 m	FRONT	10994	8529	6740	5296									
	LATERAL	10994	8529	6740	5296									

The specified max. loading capacities in kilogrammes include a stability of 25% or are calculated at 87% of the hydraulic lifting power, as per ISO10567. These values are applicable at the tip of the arm with optimum positioning of the corresponding arm system and with the pressure switched on. *Value limited due to excavator stability.



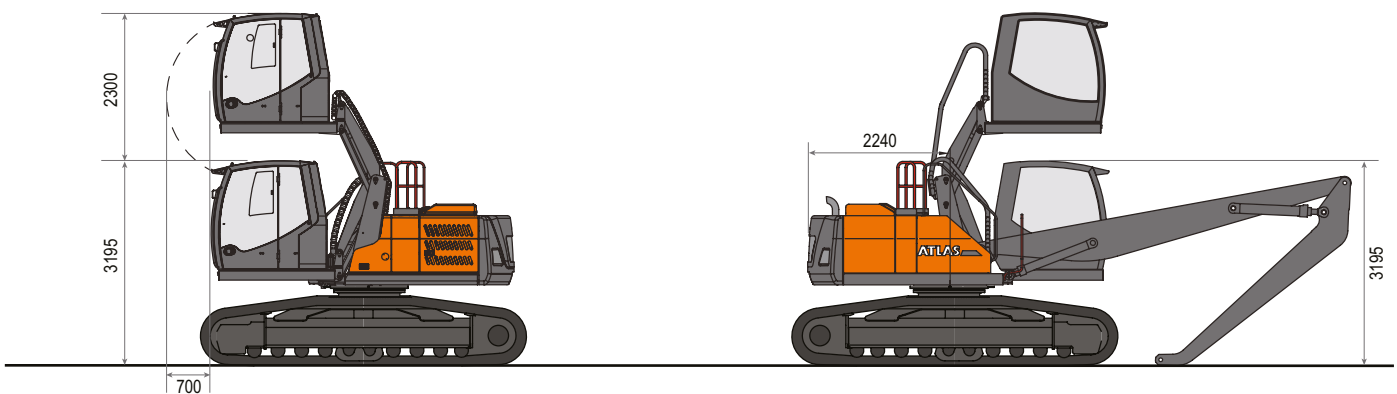
DIMENSIONS 190LC

190LC Transport position



A	TRANSPORT HEIGHT	B	TRANSPORT LENGTH		
	Adjustable boom. 1.95 m (C6.41), 3.62 m (C6.461), 2.16 m (D6.2)	2.94 m	Adjustable boom. 1.95 m (C6.41), 3.10 m (C6.461), 2.16 m (D6.2)		
	Adjustable boom. 1.95 m (C6.41), 3.62 m (C6.461), 2.66 m (D6.3)	3.10 m	Adjustable boom. 1.95 m (C6.41), 3.10 m (C6.461), 2.16 m (D6.2)		
	Monoblock 4.30 m (C6.3M) with Stick 2.16 m (D6.2)	2.94 m	Monoblock 4.30 m (C6.3M) with Stick 2.16 m (D6.2)		
	Monoblock 4.30 m (C6.3M) with Stick 2.66 m (D6.3)	3.10 m	Monoblock 4.30 m (C6.3M) with Stick 2.66 m (D6.3)		
C	TRANSPORT WIDTH WHEEL	BASE 2.20 m	F	DRIVELENGTH	4.50 m
	Base plate width 600 mm	2.80 m	G	GROUND CLEARANCE	0.46 m
D	REAR SWIVEL RADIUS	2.24 m	H	HEIGHT OVER CABIN	2.95 m
E	BEARING CHAIN LENGTH	3.71 m	I	SUPERSTRUCTURE WIDTH	2.50 m

Design changes reserved, data not binding. Devices comply with the new European safety regulations.





190LC-EN(1) Effective date: 04/2020. Product specifications and prices are subject to change without notice or obligation. The photographs and/or drawings in this document are for illustrative purposes only. Refer to the appropriate Operator's Manual for instructions on the proper use of this equipment. Failure to follow the appropriate Operator's Manual when using our equipment or to otherwise act irresponsibly may result in serious injury or death. The only warranty applicable to our equipment is the standard written warranty applicable to the particular product and sale and Atlas makes no other warranty, express or implied. The only warranty applicable to our equipment is the standard written warranty applicable to the particular product and sale and Atlas makes no other warranty, express or implied. Products and services listed may be trademarks, service marks or trade-names of Atlas GmbH and/or its subsidiaries. All rights are reserved. Atlas® is a registered trademark of Atlas GmbH. Copyright © 2020 Atlas GmbH. Ref. no. 6202656

GANDERKESEE FACTORY

Atlas GmbH
Atlasstraße 6
D-27777 Ganderkesee,
Germany

Tel.: +49 (0) 4222 954 0
Fax: +49 (0) 4222 954 220
E-mail: info@atlasgmbh.com
www.atlasgmbh.com



VECHTA FACTORY

Atlas GmbH
Theodor-Heuss-Str. 3
D-49377 Vechta
Germany

T: +49 (0) 4441 954 0
F: +49 (0) 4441 954 299
E-mail: info@atlasgmbh.com
www.atlasgmbh.com



DELMENHORST FACTORY

Atlas GmbH
Stedinger Straße 324
D-27751 Delmenhorst
Germany

T: +49 (0) 4221 49 10
F: +49 (0) 4221 49 14 43
E-mail: info@atlasgmbh.com
www.atlasgmbh.com

ATLAS CRANES UK LTD NATIONAL SALES & SERVICE FACILITY

Wharfedale Road,
Euroway Trading Est.
Bradford, England BD4 6SL
United Kingdom

T: +44 8444 99 66 88
F: +44 1274 65 37 85
E-mail: atlasuk@atlasgmbh.com
www.atlas-cranes.co.uk
www.atlasgmbh.com



ATLAS
SINCE 1919

