






ATLAS

SINCE 1919

**ROBUST.
PRECISE.
EFFICIENT.**

-  max. 26.6 t
-  129 kW (175 HP)
-  0.48 - 1.87 m³



CRAWLER EXCAVATOR 260LC

WWW.ATLASGMBH.COM

TECHNICAL SPECIFICATION 260LC

Technical Specification

ENGINE

Power according to ISO 9249.....129 kW (175 HP)	Cylinder capacity..... 6700 cm ³	Air filter..... Dry air filter
RPM..... 1800/min	Number of cylinders..... 6	Battery..... 2 x 12 V / 100 Ah
Make/model.....Cummins / QSB 6.7 (Tier 4 F)	Automatic idle..... Standard	Alternator..... 24 V / 70 Ah
Design..... Turbocharger/LLK	Cooling system..... Water-cooled	Starter..... 24 V / 3.2 kW

HYDRAULIC SYSTEM

• Load-limit-controlled high-performance piston pump	• Suction valves for all work functions	• Up to 2 additional control circuits possible
• 7 standard consumer loads in one control block	• Load-retaining and fine-lowering valve in lifting circuit	• Max. oil flow.....380 l/min
• Sensitive, proportional, independent control	• Pump flow control	• Max. operating pressure.340 (370)* bar
• Primary and secondary protection against overload	• Grab function is standard (without rotating)	• Operating models: 3 pre-programmed Models (Fine, Eco, Power)
	• Pipe break protection valves for lifting cylinders	• Proportional grab turning

SWING ASSEMBLY

• Swing motor:	Axial piston motor with priority valve	• Max. swing speed.....11/min
• Swing gear:	Multistage planetary transmission	• Swing torque..... 63.2 kNm
• Swing brake:	Automatic multidisc parking brake (can also be operated manually)	

TRACTION DRIVE AND BRAKES

• Steering:	2 control levers / pedals enable separate drive of both chains	• Maximum speed.....3.3 / 5.8 km/h
• Traction drive:	2 automatic drive positions	• Tractive force..... 240* kN
• Brakes:	Hydraulic, service-free multidisc brakes	• Max. climbing power..... 70 %

UNDERCARRIAGE

Construction:	Drives:	• Sealed bolts
• X-frame	• Drive quality B60	• Chain tension via hydraulic oil cylinder and pre-tensioned steel spring
• Lifetime lubrication of track and carrier rollers	• Three-section base plates	• Track LC.....2.40 m
• 4 lashing grommets	• Chains lubricated	

FILL CAPACITIES

• Fuel tank..... 382 liter	• Engine oil..... 20 liter	• Hydraulic System .. 400 liter
• Cooling system..... 42 liter	• Hydraulic tank..... 224 liter	AdBlue® 18.9 liter

DRIVER'S CAB

• Meets latest safety standards	CONTROL:	CLIMATE CONTROL:
• Extra-wide entrance	• Ergonomically designed joysticks	• Automatic climate control as standard
• Spacious leg room	• Clear and concise arrangement of the switches in the control panel	• Very good air distribution through optimally arranged nozzles
• Excellent circumferential visibility		
• Preparation for radio installation with mute function	MONITORING:	SOUND LEVELS:
	• Operating data screen display	• ISO 6396 (L _p A) in driver's cab..... 72 dB(A)
DRIVER'S SEAT:	• Automatic system for monitoring, warning and storage of data	• 2000/14 EG (L _w A) ambience level.....103 dB(A)
• Air-cushioned comfort seat (optional seat heating)		
• Arm rests and lumbar support		
• Seat adjustable separately from console		

* Values when pressure is switched on

WORKING EQUIPMENT 260LC

Working Equipment

OPERATING WEIGHTS		Crawler Excavator 260LC	
	Monoblock	Monoblock 5.95 m (C25.3M) Stick 2.50 m (D25.2)	Monoblock 6.95 m (C25.5M) Stick 3.20 m (D25.3)
	Ground plate width 500 mm	-	-
	Ground plate width 600 mm	25.4 t	25.8 t
	Ground plate width 700 mm	25.7 t	26.1 t
	Ground plate width 800 mm	26.0 t	26.5 t

OPERATING WEIGHTS		Crawler Excavator 260LC	
	Adjustable base arm Adjustable boom	1.95 m (C25.41) 4.23 m (C25.46) Stick 2.15 m (D21.23)	1.95 m (C25.41) 4.23 m (C25.46) Stick 2.65 m (D21.33)
	Ground plate width 500 mm	-	-
	Ground plate width 600 mm	25.7 t	25.7 t
	Ground plate width 700 mm	26.0 t	26.0 t
	Ground plate width 800 mm	26.3 t	26.3 t

Operating weight with driver, completely filled implement and 1.0 t for attachments

STANDARD EQUIPMENT		
Engine:		
<ul style="list-style-type: none"> Emission level 6 cylinders Engine speed adjustment via potentiometer Automatic idle Diesel pre-filter Engine monitoring 	<ul style="list-style-type: none"> Cylinder end-position damping Accumulator for emergency lowering of the arm system 	<ul style="list-style-type: none"> Superstructure: Spacious and lockable storage space in super-structure
Hydraulics:		
<ul style="list-style-type: none"> Load-limit-controlled double displacement pump Hydraulic attachment kit for grabbing (without rotation) Hammer hydraulics (max. 200 Liter) Quadrant hydraulics (max. 200 Liter) Pipe-break protection valves for lifting cylinders Pressure control level 	<ul style="list-style-type: none"> Cab: Air conditioner Preparation for radio installation with mute function Air-cushioned comfort seat Seat adjustable separately from console Ready for electric cooling box Different options for storage, compartment for documents Bottle holder Heat-insulating glass, tinted windows Operating data screen display Rear view security camera with 5 inch LCD-colour monitor 	<ul style="list-style-type: none"> Equipment: Combined lubricating points for swing bearing and arm equipment
Undercarriage:		
		<ul style="list-style-type: none"> X frame Integrated, hydraulic traction drive with brake valve Automatic, hydraulic, service-free multi-disc brakes Chain tensioning can be adjusted via oil cylinder Lubricated, sealed chains 4 lashing grommets on the undercarriage

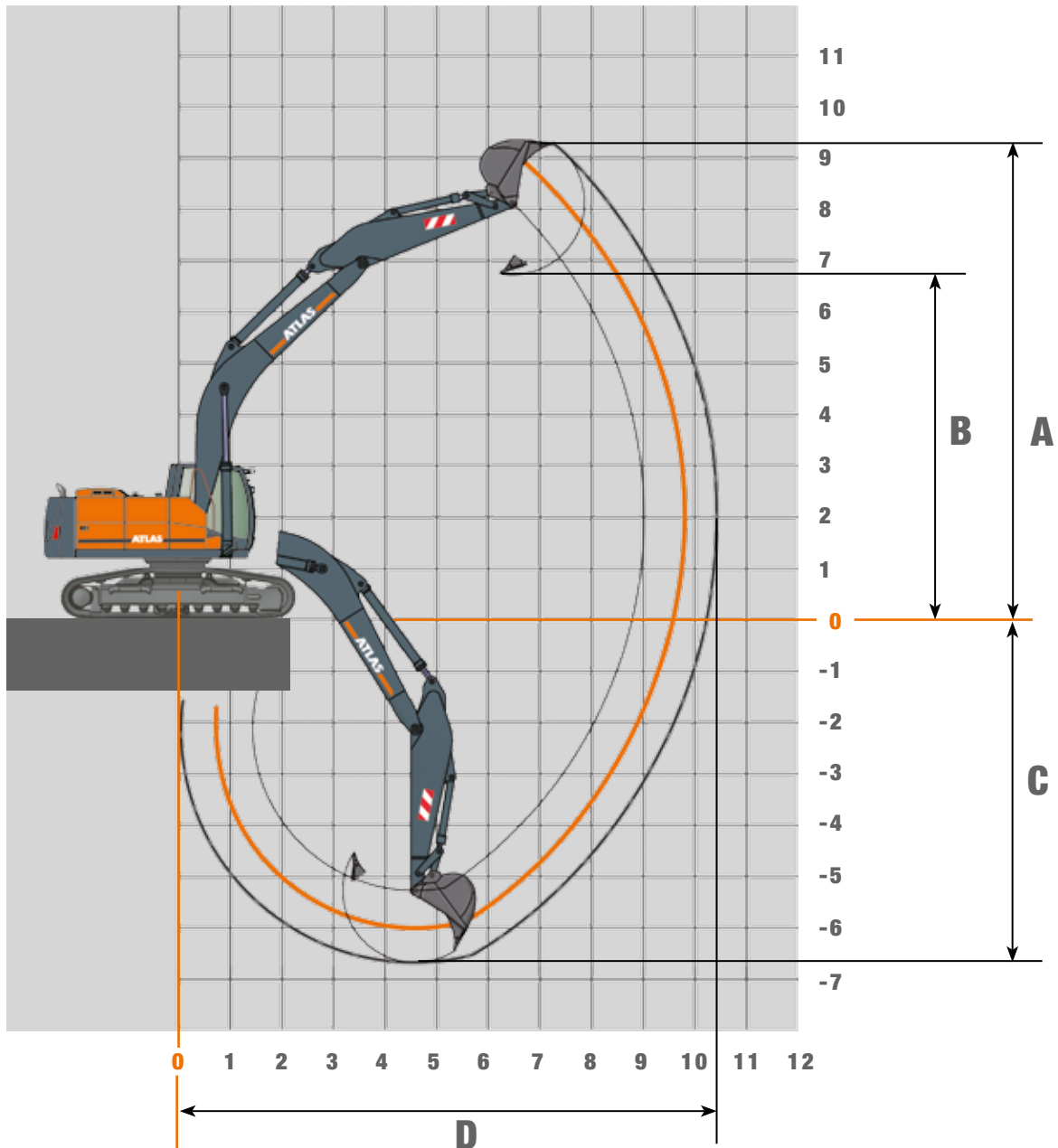
SPECIAL EQUIPMENT		
Monoblock:	Engine:	Equipment:
<ul style="list-style-type: none"> Monoblock with stick cylinder 5.95 m (C25.3M) Monoblock with stick cylinder 6.95 m (C25.5M) 	<ul style="list-style-type: none"> Refueling pump Auxiliary heating Cold start assistance 	<ul style="list-style-type: none"> Automatically controlled and monitored electric central lubrication system GPS/GSM telemetric system for monitoring of operating data, consumption, position LED working lights
Stick for Monoblock:	Hydraulics:	Cab:
<ul style="list-style-type: none"> Stick 2.50 m (D25.2) Stick 3.20 m (D25.3) 	<ul style="list-style-type: none"> Shear / sorting grab function with comfort pressure controller Grab and grab rotating function Up to two additional circuits Floating function for the boom Hydraulic quick coupler Pipe-break protection valve for bending cylinder Pipe-break protection valves for lifting cylinders Bio oil 	<ul style="list-style-type: none"> Cab protection guard Flood lights Beacon light Radio CD/MP3, front AUX in, USB Heated driver's seat Electric cooling box
Adjustable booms:		
<ul style="list-style-type: none"> Base arm 1.95 m (C21.41) Adjustable boom adjusting cylinder 4.23 m (C25.46) 		
Sticks for adjustable booms:		
<ul style="list-style-type: none"> Stick 2.15 m (D21.23) Stick 2.65 m (D21.33) 		Other special equipment: See price list

ATTACHMENTS (SELECTION)					
	Bucket	Bucket	Bucket	Bucket	Bucket
Content SAE	0.48 m ³	0.93 m ³	1.17 m ³	1.53 m ³	1.65 m ³
Cutting width	600 mm	1000 mm	1200 mm	1500 mm	1600 mm
Weight	620 kg	730 kg	730 kg	990 kg	1070 kg

stability acc. to ISO 10567, bulk weight 1.8 t/m³

WORKING RANGES 260LC

Working ranges Monoblock 5.95 m (C25.3M)













STICK LENGTHS	2.50 m (D25.2)	3.20 m (D25.3)
A Max. cut-in height	9.10 m	9.36 m
B Max. pouring height	6.50 m	6.77 m
C Max. trench depth	6.13 m	6.83 m
D Max. reach	9.92 m	10.55 m
Max. bucket digging force	168* kN	168* kN
Max. stick digging force	161* kN	136* kN

Unit is equipped with monoblock attachment 5.95 m (C25.3M).

* When pressure is switched on

LIFTING CAPACITIES 260LC

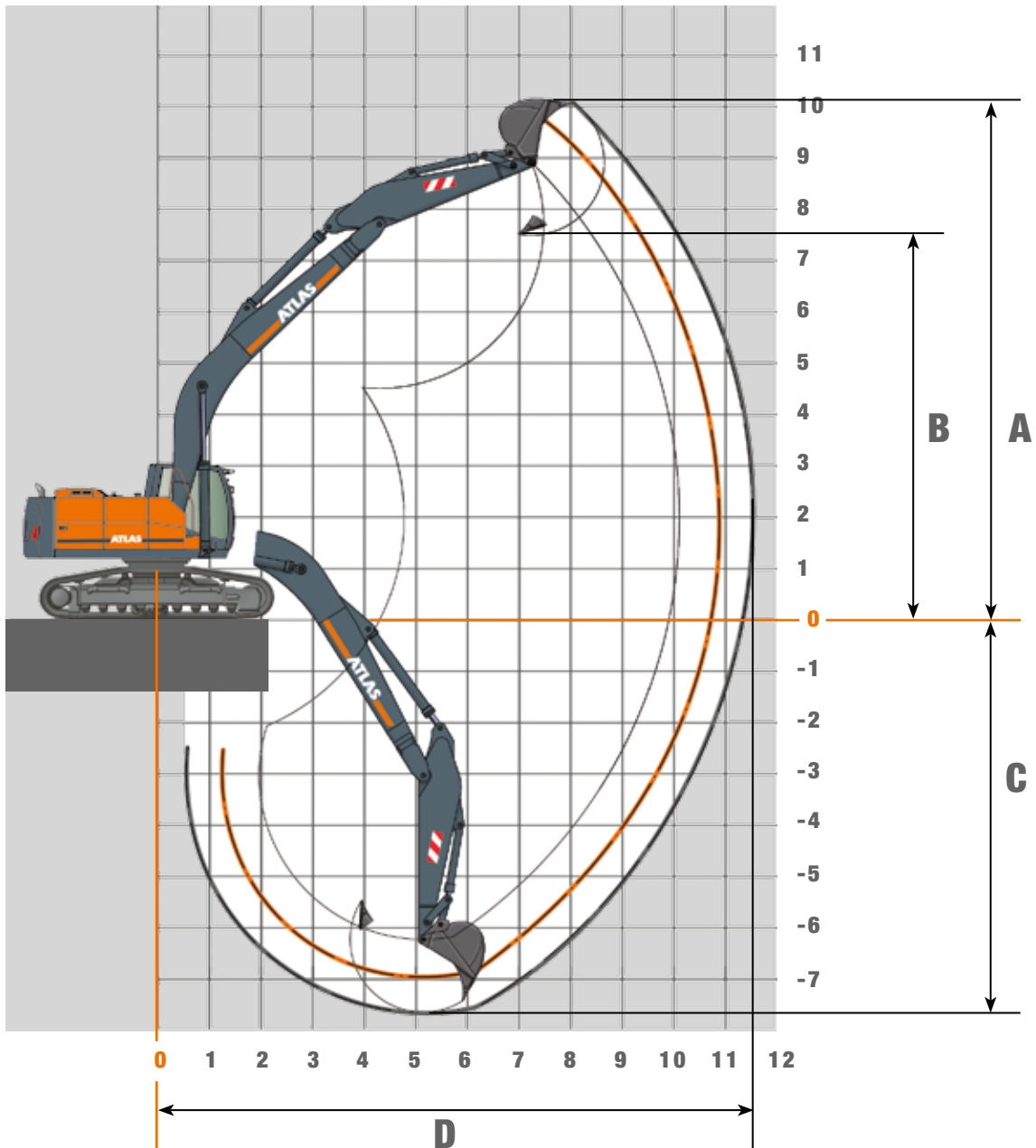
Lifting capacities Monoblock 5.95 m (C25.3M)

260LC		Lifting capacity at 370 bar									
HEIGHT	3.0 m		4.5 m		6.0 m		7.5 m		9.0 m		
	 FRONT	 LATERAL	 FRONT	 LATERAL	 FRONT	 LATERAL	 FRONT	 LATERAL	 FRONT	 LATERAL	
Monoblock 5.95 m (C25.3M) with stick 2.50 m (D25.2). Max. reach 9.92 m											
+ 9.0 m											
+ 7.5 m											
+ 6.0 m					9737*	7282					
+ 4.5 m			13427*	10705	10391	7039	7352	5088			
+ 3.0 m			15810	9926	10026	6717	7197	4947			
+ 1.5 m			15160	9393	9704	6433	7039	4803			
+ 0 m			14955	9225	9509	6263	6932	4705			
- 1.5 m	15061*	15061*	15034	9290	9491	6247	6949	4721			
- 3.0 m	22419*	18383	15250	9467	9627	6366					
- 4.5 m			12605*	9815							
Monoblock 5.95 m (C25.3M) with stick 3.20 m (D25.3). Max. reach 10.55 m											
+ 9.0 m											
+ 7.5 m											
+ 6.0 m							7559	5264			
+ 4.5 m					9820*	7158	7432	5164			
+ 3.0 m			15119*	10153	10121	6786	7233	4968	5509	3811	
+ 1.5 m			15237	9434	9719	6431	7029	4782	5421	3730	
+ 0 m			14804	9078	9442	6187	6874	4641			
- 1.5 m			14739	9024	9329	6088	6815	4588			
- 3.0 m	22054*	17723	14901	9157	9406	6156	6908	4672			
- 4.5 m	20384*	18242	14907*	9443	9665	6384					

The specified max. loading capacities in kilogram include a stability of 25% or are calculated at 87% of the hydraulic lifting power, as per ISO10567. These values are applicable at the tip of the arm with optimum positioning of the corresponding arm system and with the pressure switched on. * Value limited due to hydraulics.

WORKING RANGES 260LC

Working ranges Monoblock 6.95 m (C25.5M)



STICK LENGTHS	2.50 m (D25.2)	3.20 m (D25.3)
A Max. cut-in height	9.81 m	10.08 m
B Max. pouring height	7.21 m	7.48 m
C Max. trench depth	6.99 m	7.69 m
D Max. reach	10.94 m	11.58 m
Max. bucket digging force	168* kN	168* kN
Max. stick digging force	161* kN	136* kN

Unit is equipped with monoblock attachment 6.95 m (C25.5M).

* When pressure is switched on

LIFTING CAPACITIES 260LC

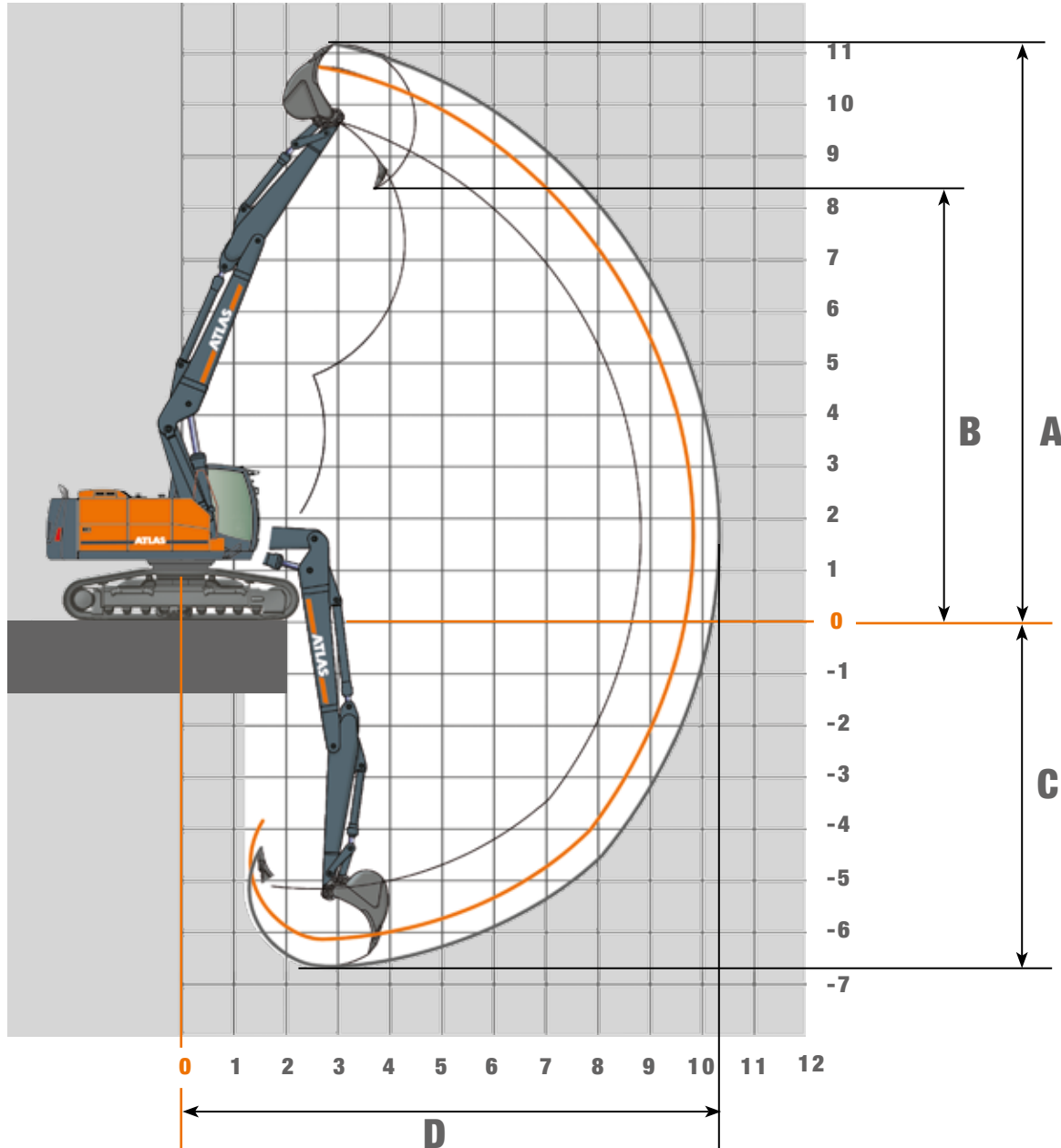
Lifting capacities Monoblock 6.95 m (C25.5M)

260LC		Lifting capacity at 370 bar									
HEIGHT	3.0 m		4.5 m		6.0 m		7.5 m		9.0 m		
	FRONT	LATERAL	FRONT	LATERAL	FRONT	LATERAL	FRONT	LATERAL	FRONT	LATERAL	
Monoblock 6.95 m (C25.5) with stick 2.50 m (D25.2). Max. reach 10.94 m											
+ 9.0 m											
+ 7.5 m							7490	5197			
+ 6.0 m							7428	5140			
+ 4.5 m					10120	6778	7238	4968	5496	3795	
+ 3.0 m					9646	6361	7010	4760	5399	3706	
+ 1.5 m					9296	6053	6809	4578	5297	3611	
+ 0 m					9125	5903	6678	4459	5228	3547	
- 1.5 m			14574	8879	9122	5900	6649	4432			
- 3.0 m	16875*	16875*	14749	9023	9227	5993	6733	4508			
- 4.5 m			13951*	9274	9454	6193					
Monoblock 6.95 m (C25.5M) with stick 3.20 m (D25.3). Max. reach 11.58 m											
+ 9.0 m											
+ 7.5 m											
+ 6.0 m											
+ 4.5 m							7527	5218	5625	3905	
+ 3.0 m					9700*	6895	7301	5013	5536	3823	
+ 1.5 m					9731	6421	7031	4767	5400	3697	
+ 0 m					9284	6028	6782	4541	5264	3571	
- 1.5 m			10619*	8471	9019	5794	6603	4378	5160	3475	
- 3.0 m			14169	8523	8926	5713	6514	4297	5123	3440	
- 4.5 m			14337	8661	8993	5771	6554	4334			

The specified max. loading capacities in kilogram include a stability of 25% or are calculated at 87% of the hydraulic lifting power, as per ISO10567. These values are applicable at the tip of the arm with optimum positioning of the corresponding arm system and with the pressure switched on. * Value limited due to hydraulics.

WORKING RANGES 260LC

Working ranges Adjustable Boom 1.95 m (C 25.41) and 4.23 m (C25.46)



STICK LENGTHS	2.15 m (D21.23)	2.65 m (D21.33)
A Max. cut-in height	10.68 m	11.10 m
B Max. pouring height	8.01 m	8.43 m
C Max. trench depth	6.28 m	6.67 m
D Max. reach	9.79 m	10.26 m
Max. bucket digging force	170 (185)* kN	170 (185)* kN
Max. stick digging force	138 (150)* kN	120 (131)* kN

Unit is fitted with adjustable main boom 1.95 m (C21.41) and adjustable boom 3.41 m (C21.46).

* When pressure is switched on

LIFTING CAPACITIES 260LC

Lifting capacities Adjustable Boom 1.95 m (C 25.41) and 4.23 m (C25.46)

260LC Lifting capacity at 360 bar

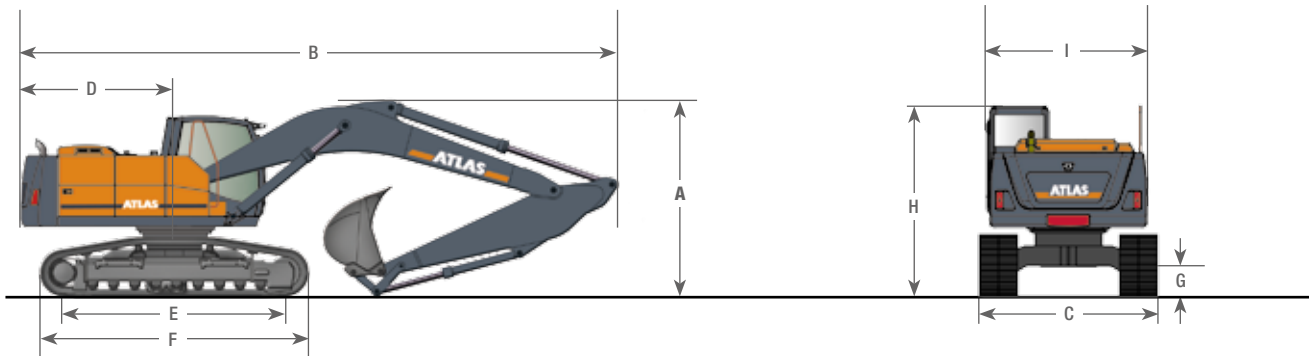
HEIGHT	3.5 m		4.5 m		6.0 m		7.5 m		8.0 m	
	FRONT	LATERAL	FRONT	LATERAL	FRONT	LATERAL	FRONT	LATERAL	FRONT	LATERAL
Adjustable boom 1.95 m (C 25.41) and 4.23 m (C25.46) with stick 2.15 m (D 21.23) Max. reach 9.79 m										
+ 8.0 m			7875*	7875*						
+ 7.0 m			7603*	7603*	7236*	6827				
+ 6.0 m	9031*	9031*	8088*	8088*	7149*	6842				
+ 5.0 m	11209*	11209*	9151*	9151*	7396*	6797	6546*	4881		
+ 4.0 m	9543*	9543*	10156*	9882	7813*	6745	6802*	4912		
+ 3.0 m	9627*	9627*	11508*	9758	8362*	6694	7020*	4907	6051*	4401
+ 2.0 m	12055*	12055*	12558*	9703	8968*	6669*	7340*	4870	6687*	4404
+ 1.0 m	14693*	13890	13689*	9702	9609*	6683	7371	4810	6688	4379
+ 0 m	17097*	13982*	14208*	9756	9944*	6719	7291	4734	6641	4335
- 1.0 m	19025*	14081	14281*	9791	10014	6542	7216	4662	6583	4283
- 2.0 m	19393*	13954	14400*	9686	10124	6376	7060*	4642		
- 3.0 m	19648*	13933	14723*	9530	10029	6288				
- 4.0 m	19313*	13798	13539*	9414						
Adjustable boom 1.95 m (C 25.41) and 4.23 m (C25.46) with stick 2.65 m (D 21.33) Max. reach 10.26 m										
+ 8.0 m			6876*	6876*	6514*	6514*				
+ 7.0 m			6772*	6772*	6660*	6660*				
+ 6.0 m			7270*	7270*	6763*	6763*	6120*	4952		
+ 5.0 m	9711*	9711*	8318*	8318*	7053*	6825	6275*	5013	5919*	4491
+ 4.0 m	10437*	10437*	9531*	9531*	7471*	6760	6447*	5035	6303*	4518
+ 3.0 m	10416*	10416*	10760*	9792	8010*	6696	6713*	5025	6479*	4512
+ 2.0 m	12547*	12547*	12177*	9691	8615*	6656	7047*	4984	6729	4479
+ 1.0 m	14373*	13818	13553*	9671	9249*	6642	7318	4917	6727	4424
+ 0 m	16330*	13882	14120*	9694*	9847*	6681*	7361	4826	6656	4355
- 1.0 m	18373*	14001	14185*	9775	9940	6661	7280	4733	6584	4285
- 2.0 m	19232*	13978	14284*	9704	10056*	6486	7204	4658	6555	4256
- 3.0 m	19436*	13898	14455*	9643	10059	6323				
- 4.0 m	19974*	13865	14655*	9441	9183*	6278				

The specified max. loading capacities in kilogram include a stability of 25% or are calculated at 87% of the hydraulic lifting power, as per ISO10567. These values are applicable at the tip of the arm with optimum positioning of the corresponding arm system and with the pressure switched on. * Value limited due to hydraulics.

DIMENSIONS 260LC

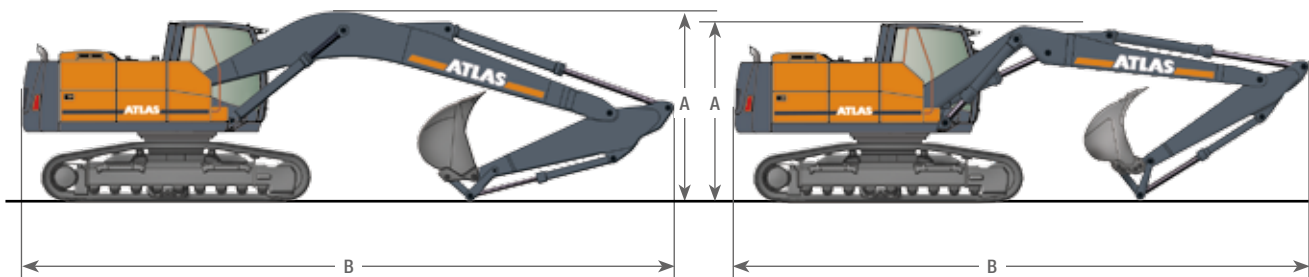
Dimensions

Monoblock 5.95 m (C25.3M)



Monoblock 6.95 m (C25.5M)

Adjustable boom 1.95m (C25.41) and 4.23m (C25.46)



A	TRANSPORT HEIGHT	B	TRANSPORT LENGTHS	
	Monoblock 5.95 m (C25.3M) with stick 2.50 m (D25.2)		Monoblock 5.95 m (C25.3M) with stick 2.50 m (D25.2)	
	3.05 m		10.12 m	
	Monoblock 5.95 m (C25.3M) with stick 3.20 m (D25.3)		Monoblock 5.95 m (C25.3M) with stick 3.20 m (D25.3)	
	3.35 m		10.15 m	
	Monoblock 6.95 m (C25.5M) with stick 2.50 m (D25.2)		Monoblock 6.95 m (C25.5M) with stick 2.50 m (D25.2)	
	3.20 m		11.14 m	
	Monoblock 6.95 m (C25.5M) with stick 3.20 m (D25.3)		Monoblock 6.95 m (C25.5M) with stick 3.20 m (D25.3)	
	3.35 m		11.15 m	
	Adjustable boom. 1.95 m (C25.41) and 4.23 m (C25.46)		Adjustable boom. 1.95 m (C25.41) and 4.23 m (C25.46)	
	with stick 2.15 m (D21.23)		with stick 2.15 m (D21.23)	
	3.15 m		9.88 m	
	with stick 2.65 m (D21.33)		with stick 2.65 m (D21.33)	
	3.15 m		9.93 m	
C	TRANSPORT WIDTHS	TRACK LC	D	REAR PIVOTING RADIUS
		2.40 m		2.80 m
	Ground plate width 600mm	3.00 m	E	SUPPORTING CHAIN LENGTH
				3.70 m
	Ground plate width 700mm	3.10 m	F	DRIVE LENGTH
				4.53 m
	Ground plate width 800mm	3.20 m	G	GROUND CLEARANCE
				0.44 m
			H	HEIGHT ABOVE CAB
				3.01 m
			I	SUPERSTRUCTURE TRANSPORT WIDTH
				2.80 m

We reserve the right to make structural changes, data is informational only, units comply with the new European safety guidelines.

GANDERKESEE FACTORY

Atlas GmbH
Atlasstraße 6
D-27777 Ganderkesee,
Germany

Tel.: +49 (0) 4222 954 0
Fax: +49 (0) 4222 954 220
E-mail: info@atlasgmbh.com
www.atlasgmbh.com



VECHTA FACTORY

Atlas GmbH
Theodor-Heuss-Str. 3
D-49377 Vechta
Germany

T: +49 (0) 4441 954 0
F: +49 (0) 4441 954 299
E-mail: info@atlasgmbh.com
www.atlasgmbh.com



DELMENHORST FACTORY

Atlas GmbH
Stedinger Straße 324
D-27751 Delmenhorst
Germany

T: +49 (0) 4221 49 10
F: +49 (0) 4221 49 14 43
E-mail: info@atlasgmbh.com
www.atlasgmbh.com

ATLAS CRANES UK LTD NATIONAL SALES & SERVICE FACILITY

Wharfedale Road,
Euroway Trading Est.
Bradford, England BD4 6SL
United Kingdom

T: +44 8444 99 66 88
F: +44 1274 65 37 85
E-mail: atlasuk@atlasgmbh.com
www.atlas-cranes.co.uk
www.atlasgmbh.com



SINCE 1919
ATLAS



www.atlasgmbh.com

ATLAS GmbH

EXCAVATORS

Atlasstraße 6

D-27777 Ganderkesee, Germany

T: +49 (0) 4222 954 0

Fax: +49 (0) 4222 954 220

info@atlasgmbh.com