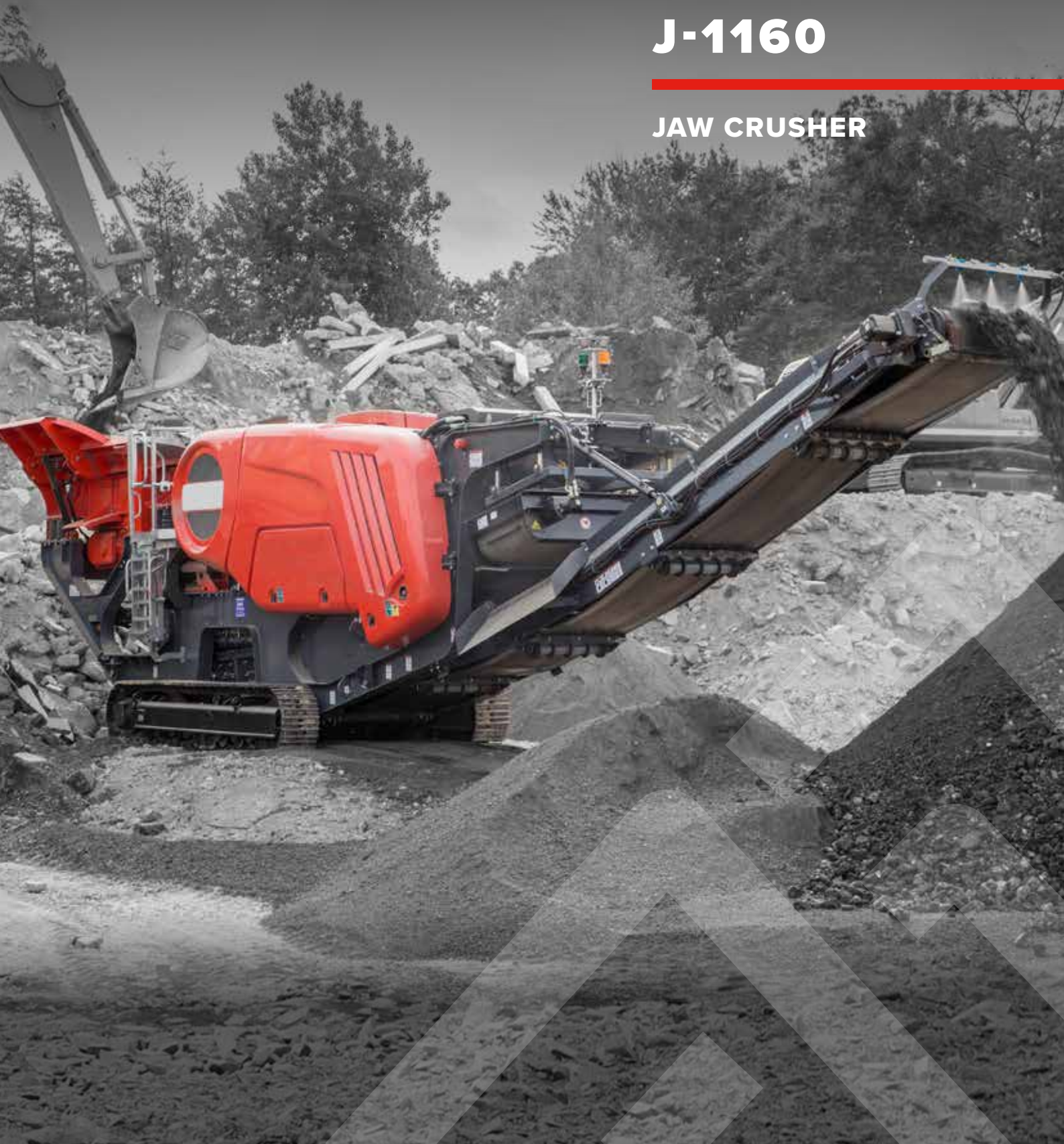


J-1160

JAW CRUSHER



STRONG **HERITAGE**, STRONG **FUTURE**

 **FINLAY**®
A TEREX BRAND

J-1160

JAW CRUSHER



The Finlay® J-1160 primary mobile jaw crusher was designed with the customer and operator in mind. The new model features increased under jaw clearance and all round preventative maintenance and serviceability access.

The heart beat of the machine is the renowned and aggressive Terex 1000 x 600mm (40" x 24") jaw crusher with a proven pedigree in recycling, demolition and aggregate production applications. The hydrostatic drive gives the operator the flexibility of variable crushing speed and the ability to run the chamber in reverse in certain applications.

Designed to maximize fuel efficiency and deliver one of the lowest cost per ton in the market place the machine is the ideal solution for small to medium sized operators.

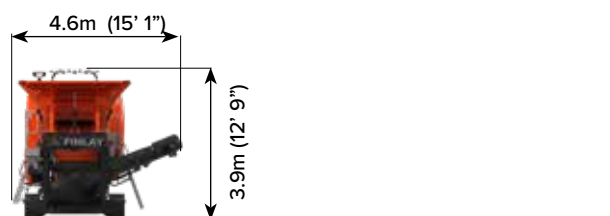
FEATURES:

- The robust high performance hydrostatic driven single toggle jaw chamber provides high capacity with large reduction ratio's.
- Automatic variable speed VGF ensures continuous choke feeding of the crushing chamber for optimal productivity.
- High powered hydrostatic drive ensures precise chamber controls and reverse functionality for clearing blockages and assisting in demolition and recycling applications.
- Fully hydraulic adjustable closed side setting minimises downtime and offers quick adjustment.

TRANSPORT DIMENSIONS



WORKING DIMENSION



MACHINE WEIGHT: * 35,350kg (77,930lbs)
* with twin pole magnet, dirt conveyor and hopper extensions

1 HOPPER/FEEDER

Hopper capacity: 5m³ (6.5yd³)
Feed height with standard hopper: 3.4m (11' 2")
Feed height with standard hopper and extensions: 3.7m (12' 1")
Vibrating grizzly feeder (VGF)
VGF Speed range: variable, 450-850 rpm
Hopper extensions hydraulic folding and hydraulic locking

2 BY-PASS CONVEYOR

Belt Width: 650mm (26")
Working Angle: 22°
Hydraulically folds for transport
Standard Discharge Height: 2.1m (6' 10")
Stockpile capacity: 12m³ (15.7yds³) @ 40°

3 JAW CRUSHER

Terex chamber single toggle jaw crusher
Inlet width: 1000mm (40")
Inlet gape: 600mm (24")
Under jaw clearance: 540mm nominal
Drive arrangement: Hydrostatic with full reverse crush capability
Maximum Closed Side Settings (CSS): 145mm (5 45/64")
Minimum Closed Side Settings (CSS): 40mm (1 1/2") Demolition and Recycling applications. 50mm (1 31/32") quarry application
Reverse action for clearing blockages
Full hydraulic closed side setting adjust

4 UNDERCARRIAGE

Shoe Width: 400mm (16")
Dual speed tracking with 'soft start'
Gradeability: 30°

5 MAGNET (OPTIONAL)

Belt Width: 750mm (30")
Drive: Hydraulic

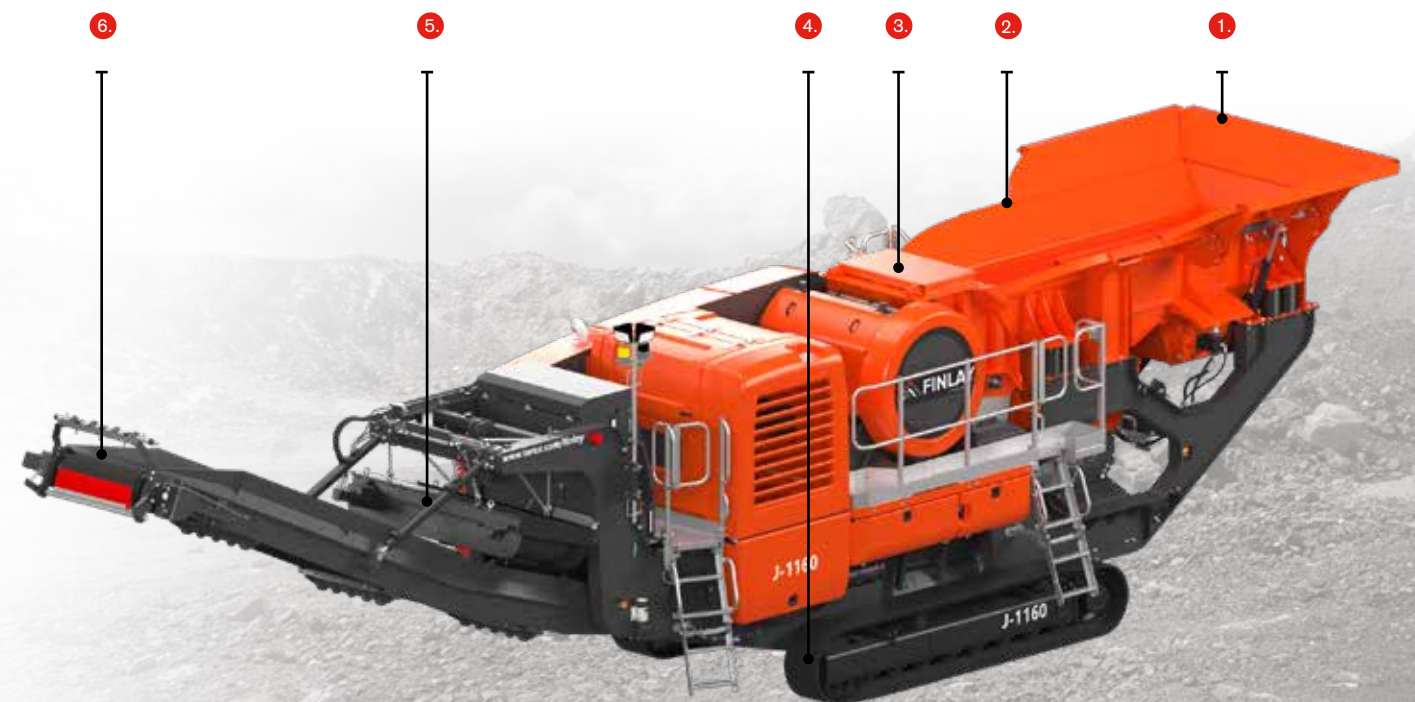
6 MAIN CONVEYOR

Belt Width: 900mm (36")
Working Angle: 25°
Discharge Height: 3.5m (11' 5")
Impact bars and wear resistant liners at feed point
Standard Stockpile capacity: 60m³ (78yd³) @40°



T-LINK TELEMATICS

T-Link telematics hardware and software along with free seven year data subscription are fitted and installed as standard.





The material in this document is for information only and is subject to change without notice.

Finlay® assumes no liability resulting from errors or omissions in this document, or from the use of the information contained herein.

Due to continual product development we reserve the right to change specifications without notice. Product performance figures given in this brochure are for guidance purposes only, this information does not constitute an expressed or implied warranty or guarantee, but shows test examples. These results will vary depending on application. Photographs are for illustrative purposes only; some or all of the machines in the illustrations may be fitted with optional extras. Please check with your Dealer for details on optional extras.

Published and Printed in 2022