



**TFV**

# VERTICAL CUTTER HEADS

TFV 850

- High performance
- High precision
- Low vibrations
- Maintenance-free
- Versatile



# VERTICAL CUTTER HEADS

TFV 400  
TFV 600  
TFV 850



Intended for **excavator mounting**, Simex TFV vertical cutter heads are **ideal for profiling, excavating irregular shapes, cropping piles, trenching smaller widths, removing iron and steel residues, or mixing soils.**

Milling drums available for different applications and diameters.



## ADVANTAGES

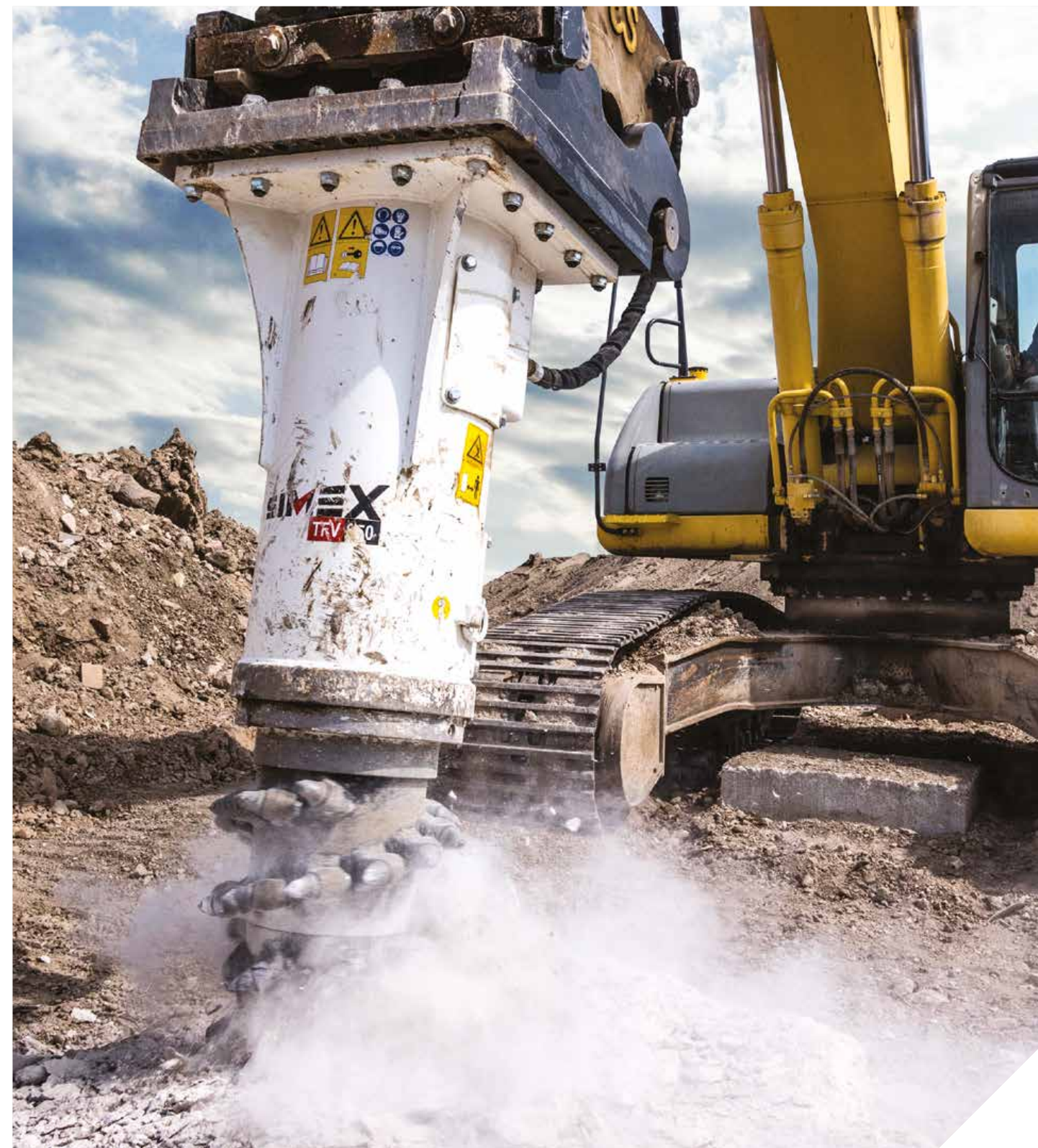
- High performance
- High precision
- Low vibrations
- Maintenance-free
- Versatile

TECHNICAL DATA		TFV 400	TFV 600	TFV 850
Recommended excavator weight <sup>(1)</sup>	ton lbs	7 - 12 15400 - 26400	10 - 18 22000 - 39600	15 - 25 33000 - 55000
Rotation speed	rpm	100	90	80
Diameter	mm inch	380 15	420 17	450 18
Height without bracket	mm inch	1000 40	1100 43	1200 48
Max. power	kW (hp)	37 (50)	50 (68)	60 (82)
Operating weight <sup>(2)</sup>	kg lbs	245 540	400 880	570 1255
Required oil flow	l/min gpm	60 - 110 16 - 29	100 - 140 26 - 37	120 - 170 32 - 45
Max. oil pressure	BAR psi	350 5100	350 5100	350 5100

<sup>(1)</sup> User is responsible for ensuring that the equipment meets the excavator's specifications and weight requirements.

<sup>(2)</sup> Without mounting bracket attaching to prime mover.

Simex does not accept responsibility or liability for the information provided. Technical modifications may vary without prior notice.



- Utilities
- Quarries and mines
- Demolition
- Port and underwater works
- Construction and building
- Infrastructure
- Tunneling
- Agriculture and forestry
- Recycling
- Roadworks
- Trenching
- Mini-excavator
- Excavator
- Skid steer loader
- Front loader
- Backhoe