



RANGE
VSE

SCREENING BUCKET

WITH ADJUSTABLE OUTPUT SIZE

VSE 10

VSE 20

VSE 30

VSE 40

- Quick adjustment of output size
- Effective with wet material
- High productivity
- Simple operation
- Easy loading
- Easily replaceable screening tools

SCREENING BUCKET

WITH ADJUSTABLE OUTPUT SIZE

VSE 10
VSE 20
VSE 30
VSE 40



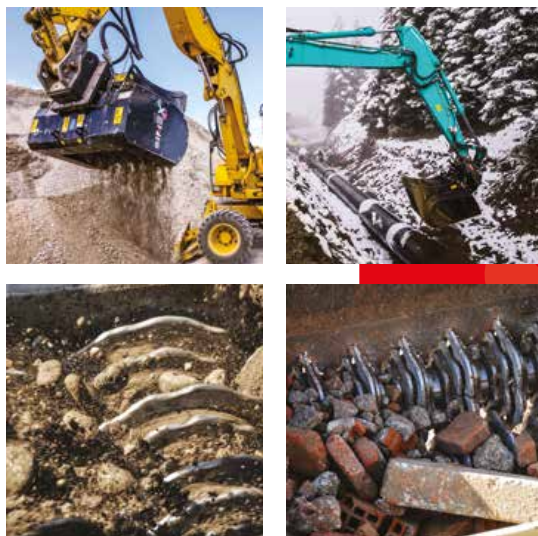
Designed for **separating different-sized materials on the work site**, Simex VSE screening buckets are unique for their **easy loading, very simple operation and high productivity**.

The exclusive Simex patent allows **rapid adjustment of output size** of the screened material in only seconds via a control in the operator cabin.

SIMEX
• patent •

ADVANTAGES

- Quick adjustment of output size
- Effective with wet material
- High productivity
- Simple operation
- Easy loading
- Easily replaceable screening tools



TECHNICAL DATA		VSE 10	VSE 20	VSE 30	VSE 40
Recommended excavator weight (1) (2)	ton lbs	8 - 13 17500 - 29000	12 - 18 26000 - 40000	16 - 30 35000 - 66000	30 - 45 66000 - 99000
Mouth width	mm inch	860 34	1100 43	1260 50	1340 53
Total width	mm inch	1220 48	1485 58	1650 65	1835 72
Bucket capacity (SAE)	m³ yd³	0,40 0,52	0,70 0,92	1,00 1,30	1,80 2,35
Screening area	m² yd²	0,56 0,67	0,80 0,96	1,00 1,20	1,36 1,63
Shaft travel	mm inch	40 1,6	40 1,6	40 1,6	40 1,6
Number screening shafts	n°	2	2	2	3
Operating weight (3)	kg lbs	965 2125	1400 3080	1845 4060	2725 6000
Required oil flow	l/min gpm	90 - 125 24 - 33	100 - 150 27 - 40	165 - 220 44 - 58	180 - 280 48 - 74
Max. required oil pressure	BAR psi	250 3600	250 3600	250 3600	250 3600

(1) The maximum operating load permitted for the excavator, when added to the weight of the standard bucket, must match or exceed the weight of the bucket at full load.
(2) User is responsible for ensuring that the equipment meets the excavator's specifications and weight requirements.
(3) Without mounting bracket.

Simex does not accept responsibility or liability for the information provided. Technical modifications may vary without prior notice.



Utilities
Quarries and mines
Demolition
Port and underwater works
Construction and building
Infrastructure
Tunneling
Agriculture and forestry
Recycling
Roadworks
Trenching

Mini-excavator
Excavator
Skid steer loader
Front loader
Backhoe

VSE 10
VSE 20
VSE 30
VSE 40

Utilities

Quarries and mines

Demolition

Port and
underwater works

Construction
and building

Infrastructure

Tunneling

Agriculture
and forestry

Recycling

Roadworks

Trenching

Mini-excavator

Excavator

Skid steer loader

Front loader

Backhoe

HIGH INCREASE IN PRODUCTIVITY

Shafts are composed of elements with varying-sized disks that produce an intense **whirling of the material to be screened.**

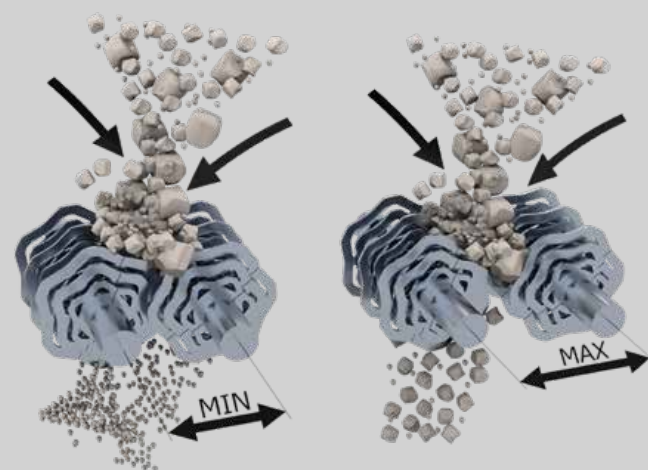
SIMEX
• patent •

SIMEX PATENT

Quick adjustment of output size.

Thanks to a simple control from the operator **cabin**, the Simex-patented mechanism allows shafts to be distanced or closed via a hydraulic system to **vary output size of screened material in only seconds.** Alternatively, the adjustment can be made by a remote control (*optional*).

MINIMUM/MAXIMUM



HIGH PRODUCTIVITY

Even when working with wet soil

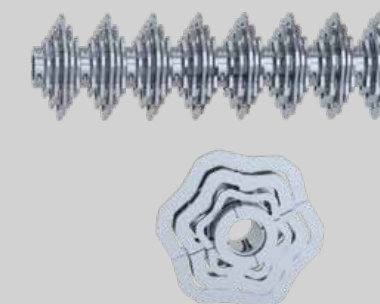
EASY LOADING

Wide mouth shaped as standard bucket

SCREENING TOOLS ARE EASILY REPLACEABLE

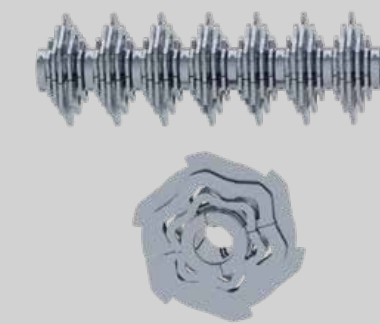
Screening elements have different profiles to work with various materials. **Tool replacement is rapid and requires no disassembly of shafts.**

STANDARD TOOLS



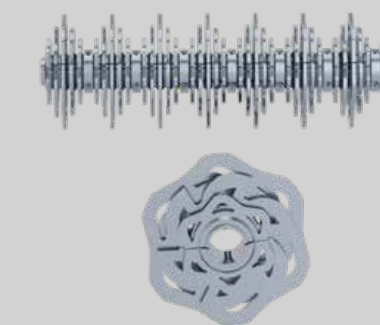
Tool for
screening
mixed material

BREAKING TOOLS



Tool for
screening and
breaking up
light materials

MIXED TOOLS



Tool with blade
for cutting
non-stony
objects
contained in
the material

